



**Vyv**  
**Antimicrobial**  
**Luminaire**

**Specifications**

**vyv**

# Contents

3-4

## Troffers

**VSRH** Series Recessed Troffer

5-6

**VSRW** Recessed Wet Location Troffer

7-8

**VSSH** Series Surface LED

## Downlights

9-10

**VSDLA** Recessed 6" Downlight Round

11-12

**VSDLA-C** Cylinder 6" Downlight Round

13-14

**VSDLA-R** Remodel 6" Downlight Round

15-16

**VSDLB** Recessed 6" Downlight Square

17-18

**VSDLC** Recessed 4" Downlight Round

19-20

**VSDLD** Recessed 4" Downlight Square

## Linear Luminaires

21-22

**VS3255** Linear Luminaire

23-24

**VS44** Linear Luminaire

25-26

**VS46** Linear Luminaire

27-28

**VS66** Linear Luminaire

29-30

**VS72** Linear Luminaire

31-32

**VSC4** Linear Round Luminaire

33-34

**VSC6** Linear Round Luminaire

35-36

**V3095** Perimeter Luminaire

## Surgical, Medical and Cleanroom

37-38

**VSG** Surgical/Cleanroom Troffer

39-40

**VSM** Medical Patient Ambient Luminaire

41-42

**VSCRU** Cleanroom Recessed Universal Luminaire

43-44

**VSAFR** Cleanroom Recessed Flanged Top Access Luminaire

## Vapor Proof Luminaires

45-46

**VSV** Vapor Proof Luminaire

47-48

**VSVH** High Bay Vapor Proof Luminaire

## Lightbars, Task Lights and Bay Luminaires

49-50

**VVLBFP** Lightbar for Food Processing

51-52

**VTL** Task Light

53-54

**VSB** Bay Luminaire

## VSRH Series Recessed Troffer



**Application:** The Vyv VSRH Series Recessed Troffer is a recessed, lay-in coffered T-Bar troffer with modern styling and high visual comfort featuring a single shallow semi-round lens. For use with indoor applications where low-glare, high-quality and ease of installation are required. This IC-rated luminaire's low-profile design makes it ideal for shallow or obstructed plenum applications.

**Mode Switching:** Use 'Antimicrobial+Light Mode' when both continuous antimicrobial action and illumination are needed and 'Enhanced Antimicrobial Mode,' which emits a higher dosage of Vyv's antimicrobial wavelengths, as an antimicrobial cleaning mode for when full illumination is not required. See installation instructions (INS-401) for wiring details.

## Product Specifications

**Housing:** Die-formed, code gauge steel housing. Precision-formed steel reflector.

**Mounting:** This luminaire has been specifically designed for T-Bar applications. Integral earthquake clips for additional support.

**Finish:** White polyester powder painted surfaces.

**Lens:** Round linear ribbed frosted acrylic diffuser, offers high levels of efficiency and visual comfort. Indirect reflectors are precision formed and contoured to provide soft, low-glare, indirect illumination, while maintaining high-efficiency and a wide, uniform light distribution.

**Electrical:** Long life LEDs coupled with high efficiency drivers, provide quality illumination. The standard driver comes standard with 0-10v dimming and has a THD of <10%. All electrical components are UL approved.

**LED:** Patented Vyv LED package provides superior irradiance. The range of CCT (correlated color temperature) follows the color uniformity guidelines of the American National Standard regarding specifications for the chromaticity of solid-state lighting (SSL) products as per ANSI C78.377-2017.

**Approvals:** Approved to UL standards. UL listed for insulated ceilings. Suitable for damp locations. EPA Est. 94831-CAN-1. Covered by one or more of the following U.S. Patent Numbers: 9,333,274; 9,439,989; 9,713,223; 9,927,097; 10,357,582; 10,753,575



## Ordering

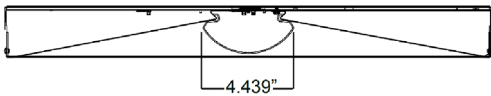
Project: \_\_\_\_\_ Date: \_\_\_\_\_  
 Luminaire Type: \_\_\_\_\_ Approved By: \_\_\_\_\_  
 Product Code: \_\_\_\_\_

Series	Size	CRI	CCT	Lumens	Voltage	Features	Options
VSRH		80			UNV		
	14 1'x4'	80 80 CRI	30 3000K	1'x4'	UNV 120-277V	<b>N</b> Dual Mode (Antimicrobial+Light Mode & Enhanced Antimicrobial Mode) <b>W</b> Antimicrobial +Light Mode	<b>Driver</b> <b>EBP</b> Emergency Lighting Battery Pack <b>Lens</b> <b>L90</b> Wide Round Linear Ribbed Frosted Acrylic <b>Mounting</b> (Flange Kits) <b>KIT00136</b> 1x4 <b>KIT00137</b> 2x2 <b>KIT00138</b> 2x4 <b>Packaging</b> <b>S1</b> Pack Bulk/Pallet Packed and/or Wrapped <b>Air Handling</b> <b>A1</b> HVAC Supply/Return Slots <b>Construction</b> <b>TBAR9</b> Housing for 9/16" T-Bar <b>C32</b> Chicago Plenum
	22 2'x2'		35 3500K	04 4,000lm			
	24 2'x4'		40 4000K	02 2,000lm			
			04 4,000lm				
				2'x4'			
				04 4,000lm			
				08 8,000lm			

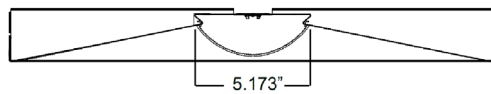
## Dimensions

Consult installation instructions for exact dimensions.

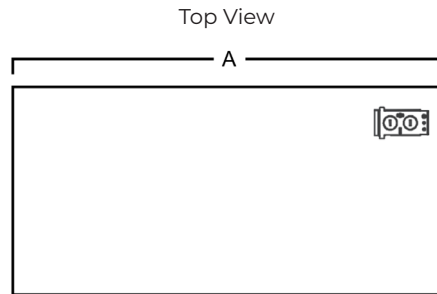
Size	A	B	C
1'x4'	47 3/4"	11 3/4"	2 1/2"
2'x2'	23 3/4"	23 3/4"	2 1/2"
2'x4'	47 3/4"	23 3/4"	2 1/2"



STANDARD LENS



OPTIONAL L90 LENS (WIDE)



Top View



End View

## Performance

Size	Lumens	CRI	Watts
1'x4'	4,000	80	80
2'x2'	2,000	80	40
2'x2'	4,000	80	80
2'x4'	4,000	80	80
2'x4'	8,000	80	160

## Electrical

<b>Input Frequency</b>	50/60Hz
<b>Power Factor</b>	>.9
<b>Control</b>	On/Off via standard light switch Antimicrobial+Light Mode to Enhanced Antimicrobial Mode (optional) via low voltage switch or controls.

Vyv will work with your facility to customize a design for lighting and antimicrobial action. Vyv, Inc. reserves the right to upgrade and improve products without notice.

SPECIFICATIONS AND DATA SUBJECT TO CHANGE WITHOUT NOTICE

Updated August 25, 2022

## VSRW Recessed Wet Location Troffer



**Application:** The Vyv VSRW Recessed Wet Location Troffer is an enclosed and gasketed luminaire. This IC-rated luminaire's welded steel housing, shallow design and dust and moisture resistance, make it ideal for use with indoor and outdoor (canopy) applications that require a wet location recessed lay-in T-Bar/Drywall luminaire with a door frame.

**Mode Switching:** Use 'Antimicrobial+Light Mode' when both continuous antimicrobial action and illumination are needed and 'Enhanced Antimicrobial Mode,' which emits a higher dosage of Vyv's antimicrobial wavelengths, as an antimicrobial cleaning mode for when full illumination is not required. See installation instructions (INS-406) for wiring details.

## Product Specifications

**Housing:** Die-formed and spot welded, steel housing assembly and 20 gauge steel door frame. Triple gasketed with sealed lens, gasketed door frame assembly and gasketed housing flange.

**Mounting:** Holes provided for chain-mounting support to building structure. Lay-in type luminaire for exposed grid type acoustical ceiling structure and swing style mounting brackets for drywall ceiling installation.

**Finish:** White, polyester powder painted housing.

**Lens:** One piece perimeter door frame with inverted frosted, prismatic pattern #12, sealed acrylic (0.095") lens. Other lenses available (see options).

**Electrical:** Long life LEDs coupled with high efficiency drivers, provide quality illumination. The standard driver comes standard with 0-10v dimming and has a THD of <10%. All electrical components are UL approved.

**LED:** Patented Vyv LED package. The range of CCT (correlated color temperature) follows the color uniformity guidelines of the American National Standard regarding specifications for the chromaticity of solid-state lighting (SSL) products as per ANSI C78.377-2017.

**Approvals:** Approved to UL standards. Suitable for wet locations. EPA Est. 94831-CAN-1. Covered by one or more of the following U.S. Patent Numbers: 9,333,274; 9,439,989; 9,713,223; 9,927,097; 10,357,582; 10,753,575



## Ordering

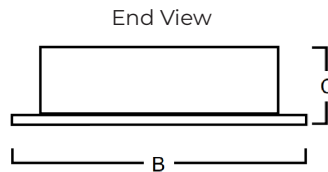
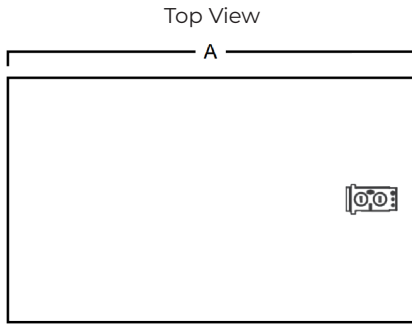
Project: \_\_\_\_\_ Date: \_\_\_\_\_  
 Luminaire Type: \_\_\_\_\_ Approved By: \_\_\_\_\_  
 Product Code: \_\_\_\_\_

Series	Size	CRI	CCT	Lumens	Voltage	Features	Options
VSRW		80			UNV		
	14 1'x4'	80 80 CRI	30 3000K	1'x4'	UNV 120-277V	<b>N</b> Dual Mode (Antimicrobial+Light Mode & Enhanced Antimicrobial Mode) <b>W</b> Antimicrobial +Light Mode	<b>Driver</b> <b>EBP</b> Emergency Lighting Battery Pack <b>Lens</b> <b>L13</b> Clear Prismatic Acrylic Lens (0.125") <b>L82</b> White Translucent Acrylic <b>L97</b> Frosted Pattern 19 Acrylic (0.156") <b>Packaging</b> <b>S1</b> Pack Bulk/Pallet Packed and/or Wrapped <b>Construction</b> <b>C03</b> Tamper Proof Fasteners <b>C32</b> Chicago Plenum <b>Approval</b> <b>X5</b> NSF Food Zone-Non-contact
	22 2'x2'		35 3500K	04 4,000lm			
	24 2'x4'		40 4000K	2'x2'			
			04 4,000lm				
				2'x4'			
				04 4,000lm			
				08 8,000lm			

## Dimensions

Consult installation instructions for exact dimensions.

Size	A	B	C
1'x4'	47 3/4"	11 3/4"	3 15/16"
2'x2'	23 3/4"	23 3/4"	3 15/16"
2'x4'	47 3/4"	23 3/4"	3 15/16"



## Electrical

<b>Input Frequency</b>	50/60Hz
<b>Power Factor</b>	>.9
<b>Control</b>	On/Off via standard light switch Antimicrobial+Light Mode to Enhanced Antimicrobial Mode (optional) via low voltage switch or controls.

## Performance

Size	Lumens	CRI	Watts
1'x4'	4,000	80	80
2'x2'	4,000	80	80
2'x4'	4,000	80	80
2'x4'	8,000	80	160

Vyv will work with your facility to customize a design for lighting and antimicrobial action. Vyv, Inc. reserves the right to upgrade and improve products without notice.

**SPECIFICATIONS AND DATA SUBJECT TO CHANGE WITHOUT NOTICE**

Updated August 25, 2022

## VSSH Series Surface LED



**Application:** The Vyv VSSH Series Surface LED is a surface or suspended mount troffer with modern styling and high visual comfort featuring a single shallow semi-round lens. For use with indoor applications where low-glare, high quality and ease of installation are required. This luminaire comes with dual high efficiency reflectors for enhanced performance.

**Mode Switching:** Use 'Antimicrobial+Light Mode' when both continuous antimicrobial action and illumination are needed and 'Enhanced Antimicrobial Mode,' which emits a higher dosage of Vyv's antimicrobial wavelengths, as an antimicrobial cleaning mode for when full illumination is not required. See installation instructions (INS-458) for wiring details.

## Product Specifications

**Housing:** Die-formed, code gauge steel housing. Precision-formed steel reflector.

**Mounting:** This luminaire has been specifically designed for surface or suspended applications.

**Finish:** White polyester powder painted surfaces.

**Lens:** Round linear ribbed frosted acrylic diffuser, offers high levels of efficiency and visual comfort. Indirect reflectors are precision formed and contoured to provide soft, low-glare, indirect illumination, while maintaining high-efficiency and a wide, uniform light distribution.

**Electrical:** Long life LEDs coupled with high efficiency drivers, provide quality illumination. The standard driver comes standard with 0-10v dimming and has a THD of <10%. All electrical components are UL approved.

**LED:** Patented Vyv LED package provides superior irradiance. The range of CCT (correlated color temperature) follows the color uniformity guidelines of the American National Standard regarding specifications for the chromaticity of solid-state lighting (SSL) products as per ANSI C78.377-2017.

**Approvals:** Approved to UL standards. UL listed for insulated ceilings. Suitable for damp locations. EPA Est. 94831-CAN-1. Covered by one or more of the following U.S. Patent Numbers: 9,333,274; 9,439,989; 9,713,223; 9,927,097; 10,357,582; 10,753,575



## Ordering

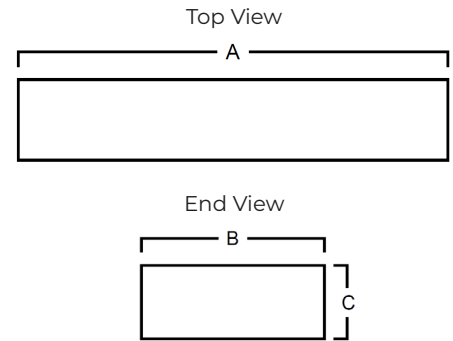
Project: \_\_\_\_\_ Date: \_\_\_\_\_  
 Luminaire Type: \_\_\_\_\_ Approved By: \_\_\_\_\_  
 Product Code: \_\_\_\_\_

Series	Size	CRI	CCT	Lumens	Voltage	Features	Options
VSSH		80			UNV		
	14 1'x4'	80 80 CRI	30 3000K	1'x4'	UNV 120-277V	<b>N</b> Dual Mode (Antimicrobial+Light Mode & Enhanced Antimicrobial Mode) <b>W</b> Antimicrobial +Light Mode	<b>Driver</b> <b>EBP</b> Emergency Lighting Battery Pack  <b>Lens</b> <b>L90</b> Wide Round Linear Ribbed Frosted Acrylic  <b>Packaging</b> <b>S1</b> Pack Bulk/ Pallet Packed and/or Wrapped
	22 2'x2'		35 3500K	04 4,000lm			
	24 2'x4'		40 4000K	2'x2'			
				02 2,000lm			
				04 4,000lm			
				2'x4'			
				04 4,000lm			
				08 8,000lm			

## Dimensions

Size	A	B	C
1'x4'	47 3/4"	11 3/4"	4 3/16"
2'x2'	23 3/4"	23 3/4"	3 3/16"
2'x4'	47 3/4"	23 3/4"	3 3/16"

Consult installation instructions for exact dimensions.



## Mounting Accessories (Ordered Separately)

- KIT00001** Chain Set (2) 4ft w/ S-hooks.M10
- KIT00004** Aircraft "Y" Cable (10Ft) with Adjustable Grip (2).M36
- KIT00018** S-Hooks Only (set of 4) for C/S Chain.M45
- KIT00022** Chain Set (2) 3ft w/ S-hooks.M10
- KIT00040** Chain Set (2) 6ft w/ S-hooks.M10
- KIT00042** Chain Set (2) 12ft w/ S-hooks.M10

## Electrical

<b>Input Frequency</b>	50/60Hz
<b>Power Factor</b>	>.9
<b>Control</b>	On/Off via standard light switch Antimicrobial+Light Mode to Enhanced Antimicrobial Mode (optional) via low voltage switch or controls.

## Performance

Size	Lumens	CRI	Watts
1'x4'	4,000	80	80
2'x2'	2,000	80	40
2'x2'	4,000	80	80
2'x4'	4,000	80	80
2'x4'	8,000	80	160

Vyv will work with your facility to customize a design for lighting and antimicrobial action. Vyv, Inc. reserves the right to upgrade and improve products without notice.

**SPECIFICATIONS AND DATA SUBJECT TO CHANGE WITHOUT NOTICE**

Updated November 28, 2022



## VSDLA Recessed 6" Downlight Round



**Application:** The Vyv VSDLA provides sleek recessed lighting for a clean look and feel in indoor applications.

**Mode Switching:** Use 'Antimicrobial+Light Mode' when both continuous antimicrobial action and illumination are needed and 'Enhanced Antimicrobial Mode,' which emits a higher dosage of Vyv's antimicrobial wavelengths, as an antimicrobial cleaning mode for when full illumination is not required. See installation instructions (INS-443) for wiring details.

### Product Specifications

**Lens:** Solite LP1 tempered glass lens is standard.

**Trim:** Integrated LED module with Spun Aluminum Reflector. Haze anodized reflector is standard.

**Housing:** Fabricated from stamped and die formed galvanized steel. Supplied with a junction box suitable for through wiring (4in/4out). Pivoting light engine for easy service.

**Electrical:** LEDs coupled with high efficiency drivers provide quality illumination. Fixtures supplied with 0-10V dimming down to 1% as standard.

**LED:** Patented Vyv LED package. The range of CCT (correlated color temperature) follows the color uniformity guidelines of the American National Standard regarding specifications for the chromaticity of solid-state lighting (SSL) products as per ANSI C78.377-2017.

**Approvals:** Fixtures are cETLus listed for Damp Location. Wet location optional. EPA Est. 94839-RI-1. Covered by one or more of the following U.S. Patent Numbers: 9,333,274; 9,439,989; 9,713,223; 9,927,097; 10,357,582; 10,753,575



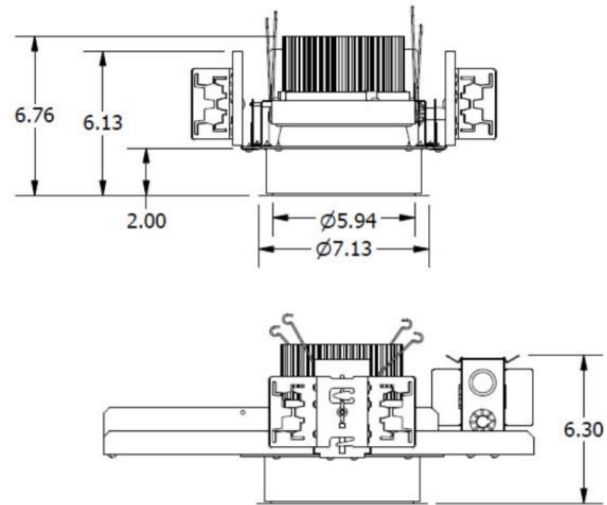
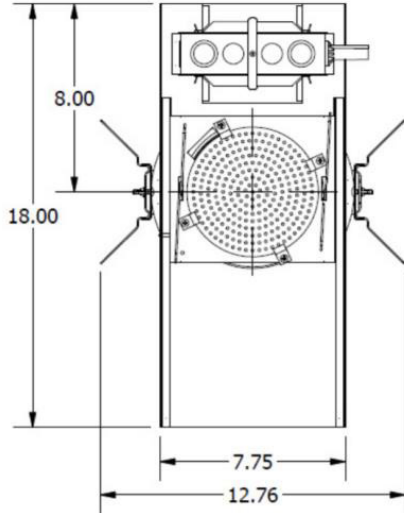
## Ordering

Project: \_\_\_\_\_ Date: \_\_\_\_\_  
 Luminaire Type: \_\_\_\_\_ Approved By: \_\_\_\_\_  
 Product Code: \_\_\_\_\_

Series	Lumens	Features	CCT	Reflector Finish	Lens	Voltage	Options
VSDLA					LP1		
	<b>02</b> 2,000lm <b>03</b> 3,000lm	<b>N</b> Dual Mode (Antimicrobial+Light Mode & Enhanced Antimicrobial Mode) <b>W</b> Antimicrobial +Light Mode	<b>30</b> 3000K <b>35</b> 3500K <b>40</b> 4000K	<b>FP1</b> Haze (Anodized) Standard <b>FP2</b> White Powder Coat <b>FP3</b> Black Powder Coat <b>FP4</b> Custom Color (Consult Factory)	<b>LP1</b>	<b>120</b> 120V <b>277</b> 277V	<b>Wiring</b> <b>BP</b> In Line Fusing  <b>Approval</b> <b>WL</b> Wet Location  <b>CRI*</b> <b>90CRI</b> 90 CRI

## Dimensions

Consult installation instructions for exact dimensions.



## Electrical

<b>Input Frequency</b>	<b>50/60Hz</b>
<b>Power Factor</b>	<b>&gt;.9</b>
<b>Control</b>	On/Off via standard light switch Antimicrobial+Light Mode to Enhanced Antimicrobial Mode (optional) via low voltage switch or controls.

\*90+CRI reduces lumen output by 20%.  
 Some options may not be available in all combinations.  
 All fixture configurations subject to final factory approval.  
 Vyv will work with your facility to customize a design for lighting and antimicrobial action.  
 Vyv, Inc. reserves the right to upgrade and improve products without notice.

**SPECIFICATIONS AND DATA SUBJECT TO CHANGE WITHOUT NOTICE**

Updated August 1, 2022

## VSDLA-C Cylinder 6” Downlight Round



**Application:** The Vyv VSDLA-C Cylinder 6” Downlight Round provides sleek lighting for a clean look and feel in indoor applications. Available with multiple mounting options.

**Mode Switching:** Use ‘Antimicrobial+Light Mode’ when both continuous antimicrobial action and illumination are needed and ‘Enhanced Antimicrobial Mode,’ which emits a higher dosage of Vyv’s antimicrobial wavelengths, as an antimicrobial cleaning mode for when full illumination is not required. See installation instructions (INS-462) for wiring details.

### Product Specifications

**Lens:** Solite LP1 tempered glass lens is standard.

**Reflector:** Integrated LED module with Spun Aluminum Reflector. Haze anodized reflector is standard.

**Housing:** The VSDLA-C is constructed from .063” wall aluminum tubing with custom spun aluminum caps welded in place.

**Electrical:** LEDs coupled with high efficiency drivers provide quality illumination. Fixtures supplied with 0-10V dimming down to 1% as standard.

**LED:** Patented Vyv LED package. The range of CCT (correlated color temperature) follows the color uniformity guidelines of the American National Standard regarding specifications for the chromaticity of solid-state lighting (SSL) products as per ANSI C78.377-2017.

**Approvals:** Fixtures are cETLus listed for Damp Location. EPA Est. 94839-RI-1. Covered by one or more of the following U.S. Patent Numbers: 9,333,274; 9,439,989; 9,713,223; 9,927,097; 10,357,582; 10,753,575



## Ordering

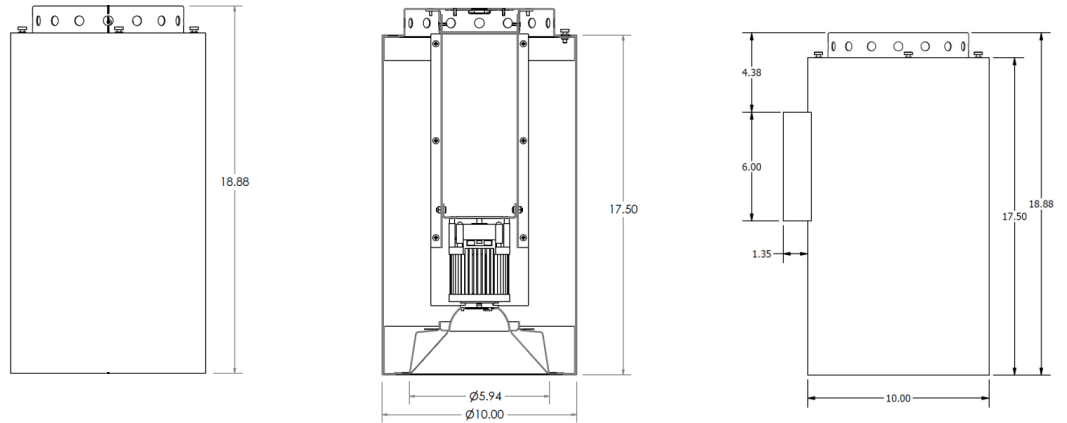
Project: \_\_\_\_\_ Date: \_\_\_\_\_  
 Luminaire Type: \_\_\_\_\_ Approved By: \_\_\_\_\_  
 Product Code: \_\_\_\_\_

Series	Lumens	Mounting	Features	CCT	Reflector Finish	Lens	Voltage	Finish
VSDLA-C						LP1		
	<b>02</b> 2,000lm <b>03</b> 3,000lm	<b>P</b> Pendant/Canopy (24" Standard) <b>SP</b> Swivel Pendant/Canopy (45°/24" Standard) <b>S</b> Surface <b>W</b> Wall	<b>N</b> Dual Mode (Antimicrobial+Light Mode & Enhanced Antimicrobial Mode) <b>W</b> Antimicrobial +Light Mode	<b>30</b> 3000K <b>35</b> 3500K <b>40</b> 4000K	<b>FP1</b> Haze (Anodized) Standard <b>FP2</b> White Powder Coat <b>FP3</b> Black Powder Coat <b>FP4</b> Custom Color (Consult Factory)	<b>LP1</b>	<b>120</b> 120V <b>277</b> 277V	<b>WHT</b> White Antimicrobial Polyester Powder Coat <b>CA</b> Custom Colors (Consult Factory)

Options	
<b>Wiring</b>	
<b>BP</b>	In Line Fusing

### Dimensions

Consult installation instructions for exact dimensions.



### Electrical

<b>Input Frequency</b>	50/60Hz
<b>Power Factor</b>	>.9
<b>Control</b>	On/Off via standard light switch Antimicrobial+Light Mode to Enhanced Antimicrobial Mode (optional) via low voltage switch or controls.

### Performance

Lumens	Features	Wattage	Lumens/Watt
02	W	33.0	60
03	W	52.8	57

Vyv will work with your facility to customize a design for lighting and antimicrobial action. Vyv, Inc. reserves the right to upgrade and improve products without notice.

SPECIFICATIONS AND DATA SUBJECT TO CHANGE WITHOUT NOTICE

Updated May 10, 2023

## VSDLA-R Remodel 6” Downlight Round



**Application:** The Vyv VSDLA-R Remodel 6” Downlight Round provides sleek recessed lighting for a clean look and feel in indoor remodel applications. Remodel installation designed for installation in existing ceilings thru a minimum 7-1/8” ceiling hole.

**Mode Switching:** Use ‘Antimicrobial+Light Mode’ when both continuous antimicrobial action and illumination are needed and ‘Enhanced Antimicrobial Mode,’ which emits a higher dosage of Vyv’s antimicrobial wavelengths, as an antimicrobial cleaning mode for when full illumination is not required. See installation instructions (INS-463) for wiring details.

### Product Specifications

**Lens:** Solite LP1 tempered glass lens is standard.

**Trim:** Integrated LED module with Spun Aluminum Reflector. Haze anodized reflector is standard.

**Housing:** Fabricated from stamped and die formed galvanized steel. Supplied with a junction box suitable for through wiring (4in/4out).

**Electrical:** LEDs coupled with high efficiency drivers provide quality illumination. Fixtures supplied with 0-10V dimming down to 1% as standard.

**LED:** Patented Vyv LED package. The range of CCT (correlated color temperature) follows the color uniformity guidelines of the American National Standard regarding specifications for the chromaticity of solid-state lighting (SSL) products as per ANSI C78.377-2017.

**Approvals:** Fixtures are cETLus listed for Damp Location. EPA Est. 94839-RI-1. Covered by one or more of the following U.S. Patent Numbers: 9,333,274; 9,439,989; 9,713,223; 9,927,097; 10,357,582; 10,753,575



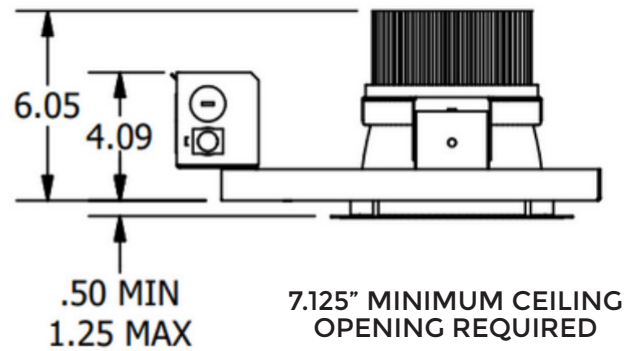
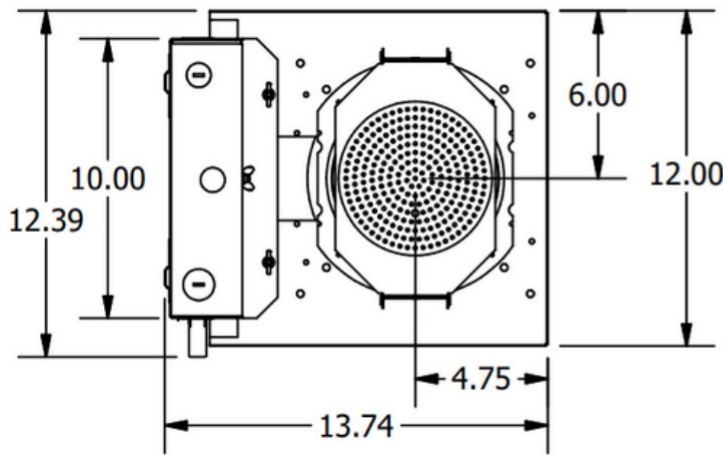
## Ordering

Project: \_\_\_\_\_ Date: \_\_\_\_\_  
 Luminaire Type: \_\_\_\_\_ Approved By: \_\_\_\_\_  
 Product Code: \_\_\_\_\_

Series	Lumens	Features	CCT	Reflector Finish	Lens	Voltage	Options
VSDLA-R					LP1		
	<b>02</b> 2,000lm <b>03</b> 3,000lm	<b>N</b> Dual Mode (Antimicrobial+Light Mode & Enhanced Antimicrobial Mode) <b>W</b> Antimicrobial +Light Mode	<b>30</b> 3000K <b>35</b> 3500K <b>40</b> 4000K	<b>FP1</b> Haze (Anodized) Standard <b>FP2</b> White Powder Coat <b>FP3</b> Black Powder Coat <b>FP4</b> Custom Color (Consult Factory)	<b>LP1</b>	<b>120</b> 120V <b>277</b> 277V	<b>Wiring</b> <b>BP</b> In Line Fusing

## Dimensions

Consult installation instructions for exact dimensions.



## Electrical

<b>Input Frequency</b>	50/60Hz
<b>Power Factor</b>	>.9
<b>Control</b>	On/Off via standard light switch Antimicrobial+Light Mode to Enhanced Antimicrobial Mode (optional) via low voltage switch or controls.

## Performance

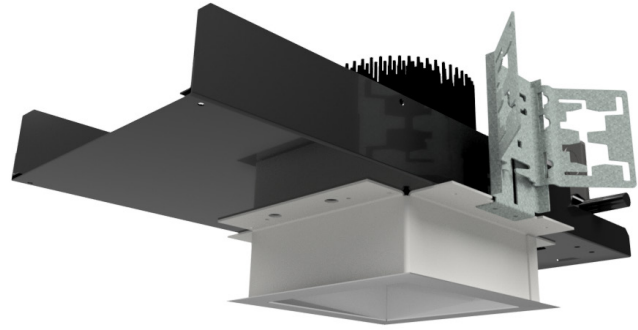
Lumens	Features	Wattage	Lumens/Watt
02	W	33.0	60
03	W	52.8	57

Vyv will work with your facility to customize a design for lighting and antimicrobial action. Vyv, Inc. reserves the right to upgrade and improve products without notice.

SPECIFICATIONS AND DATA SUBJECT TO CHANGE WITHOUT NOTICE

Updated August 1, 2022

## VSDLB Recessed 6” Downlight Square



**Application:** The Vyv VSDLB provides sleek recessed lighting for a clean look and feel in indoor applications.

**Mode Switching:** Use ‘Antimicrobial+Light Mode’ when both continuous antimicrobial action and illumination are needed and ‘Enhanced Antimicrobial Mode,’ which emits a higher dosage of Vyv’s antimicrobial wavelengths, as an antimicrobial cleaning mode for when full illumination is not required. See installation instructions (INS-443) for wiring details.

### Product Specifications

**Lens:** Solite LP1 tempered glass lens is standard.

**Trim:** Integrated LED module with Spun Aluminum Reflector. Square haze anodized reflector is standard.

**Housing:** Fabricated from stamped and die formed galvanized steel. Supplied with a junction box suitable for through wiring (4in/4out). Sliding light engine for easy service.

**Electrical:** LEDs coupled with high efficiency drivers provide quality illumination. Fixtures supplied with 0-10V dimming down to 1% as standard.

**LED:** Patented Vyv LED package. The range of CCT (correlated color temperature) follows the color uniformity guidelines of the American National Standard regarding specifications for the chromaticity of solid-state lighting (SSL) products as per ANSI C78.377-2017.

**Approvals:** Fixtures are cETLus listed for Damp Location. Wet location optional. EPA Est. 94839-RI-1. Covered by one or more of the following U.S. Patent Numbers: 9,333,274; 9,439,989; 9,713,223; 9,927,097; 10,357,582; 10,753,575



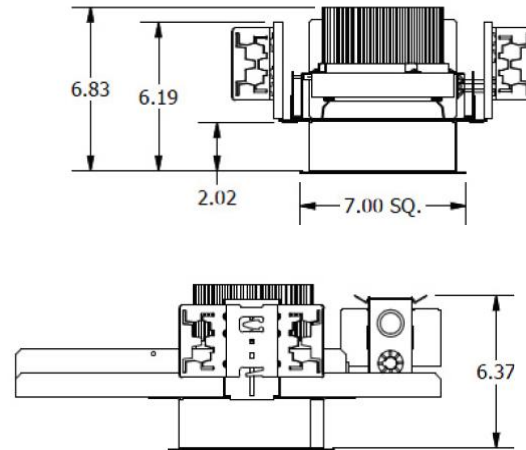
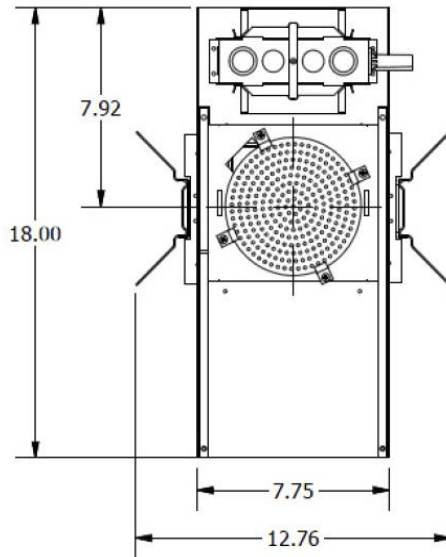
## Ordering

Project: \_\_\_\_\_ Date: \_\_\_\_\_  
 Luminaire Type: \_\_\_\_\_ Approved By: \_\_\_\_\_  
 Product Code: \_\_\_\_\_

Series	Lumens	Features	CCT	Reflector Finish	Lens	Voltage	Options
VSDLB					LP1		
	<b>02</b> 2,000lm	<b>N</b> Dual Mode (Antimicrobial+Light Mode & Enhanced Antimicrobial Mode) <b>W</b> Antimicrobial +Light Mode	<b>30</b> 3000K	<b>FP1</b> Haze (Anodized) Standard <b>FP2</b> White Powder Coat <b>FP3</b> Black Powder Coat <b>FP4</b> Custom Color (Consult Factory)	<b>LP1</b> <b>LP1</b>	<b>120</b> 120V	<b>Wiring</b> <b>BP</b> In Line Fusing <b>Approval</b> <b>WL</b> Wet Location <b>CRI*</b> <b>90CRI</b> 90 CRI
	<b>03</b> 3,000lm		<b>35</b> 3500K			<b>277</b> 277V	
			<b>40</b> 4000K				

## Dimensions

Consult installation instructions for exact dimensions.



## Electrical

<b>Input Frequency</b>	<b>50/60Hz</b>
<b>Power Factor</b>	<b>&gt;.9</b>
<b>Control</b>	On/Off via standard light switch Antimicrobial+Light Mode to Enhanced Antimicrobial Mode (optional) via low voltage switch or controls.

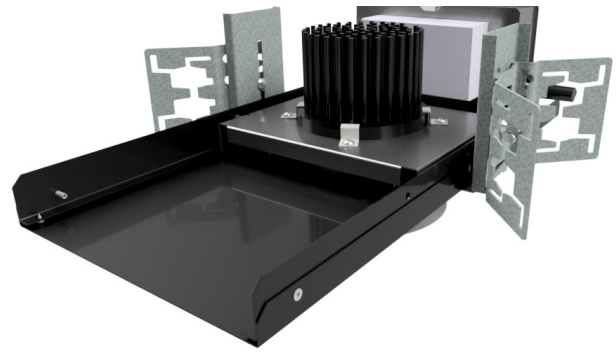
\*90+CRI reduces lumen output by 20%.  
 Some options may not be available in all combinations.  
 All fixture configurations subject to final factory approval.  
 Vyv will work with your facility to customize a design for lighting and antimicrobial action.  
 Vyv, Inc. reserves the right to upgrade and improve products without notice.

**SPECIFICATIONS AND DATA SUBJECT TO CHANGE WITHOUT NOTICE**

Updated August 1, 2022



## VSDLC Recessed 4” Downlight Round



**Application:** The Vyv VSDLC provides sleek recessed lighting for a clean look and feel in indoor applications.

**Mode Switching:** Use ‘Antimicrobial+Light Mode’ when both continuous antimicrobial action and illumination are needed and ‘Enhanced Antimicrobial Mode,’ which emits a higher dosage of Vyv’s antimicrobial wavelengths, as an antimicrobial cleaning mode for when full illumination is not required. See installation instructions (INS-443) for wiring details.

### Product Specifications

**Lens:** Solite LP1 tempered glass lens is standard.

**Trim:** Integrated LED module with Spun Aluminum Reflector. Haze anodized reflector is standard.

**Housing:** Fabricated from stamped and die formed galvanized steel. Supplied with a junction box suitable for through wiring (4in/4out). Sliding light engine for easy service.

**Electrical:** LEDs coupled with high efficiency drivers provide quality illumination. Fixtures supplied with 0-10V dimming down to 1% as standard.

**LED:** Patented Vyv LED package. The range of CCT (correlated color temperature) follows the color uniformity guidelines of the American National Standard regarding specifications for the chromaticity of solid-state lighting (SSL) products as per ANSI C78.377-2017.

**Approvals:** Fixtures are cETLus listed for Damp Location. Wet location optional. EPA Est. 94839-RI-1. Covered by one or more of the following U.S. Patent Numbers: 9,333,274; 9,439,989; 9,713,223; 9,927,097; 10,357,582; 10,753,575



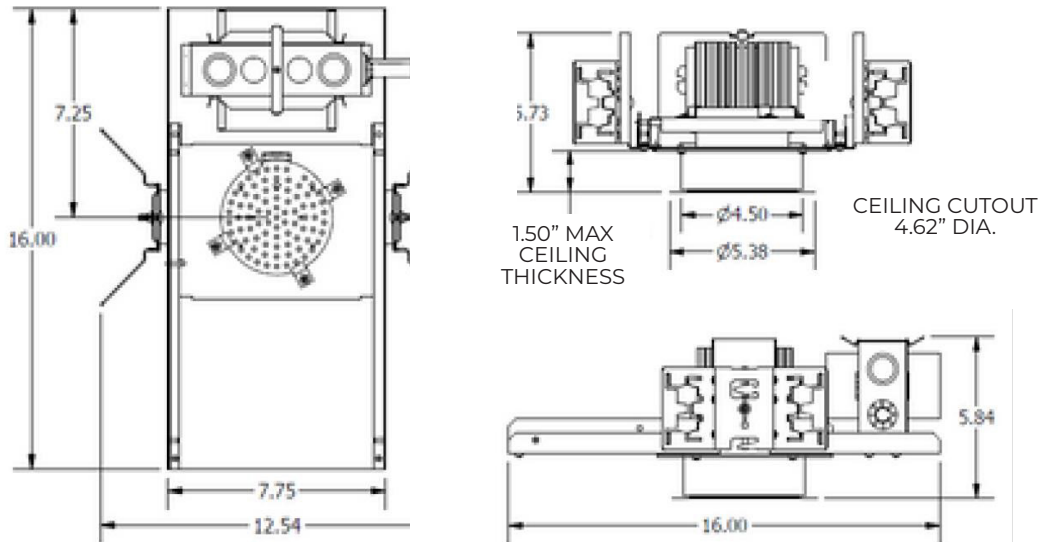
## Ordering

Project: \_\_\_\_\_ Date: \_\_\_\_\_  
 Luminaire Type: \_\_\_\_\_ Approved By: \_\_\_\_\_  
 Product Code: \_\_\_\_\_

Series	Lumens	Features	CCT	Reflector Finish	Lens	Voltage	Options
VSDLC	010				LP1		
	010 1,000lm	<b>N</b> Dual Mode (Antimicrobial+Light Mode & Enhanced Antimicrobial Mode) <b>W</b> Antimicrobial +Light Mode	<b>30</b> 3000K <b>35</b> 3500K <b>40</b> 4000K	<b>FP1</b> Haze (Anodized) Standard <b>FP2</b> White Powder Coat <b>FP3</b> Black Powder Coat <b>FP4</b> Custom Color (Consult Factory)	<b>LP1</b> <b>LP1</b>	<b>120</b> 120V <b>277</b> 277V	<b>Wiring</b> <b>BP</b> In Line Fusing <b>Approval</b> <b>WL</b> Wet Location <b>CRI*</b> <b>90CRI</b> 90 CRI

## Dimensions

Consult installation instructions for exact dimensions.



## Electrical

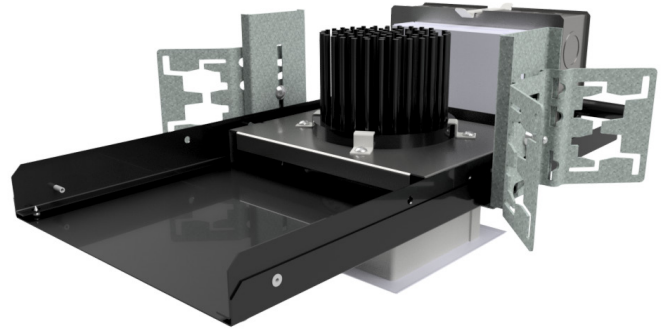
<b>Input Frequency</b>	50/60Hz
<b>Power Factor</b>	>.9
<b>Control</b>	On/Off via standard light switch Antimicrobial+Light Mode to Enhanced Antimicrobial Mode (optional) via low voltage switch or controls.

\*90+CRI reduces lumen output by 20%.  
 Some options may not be available in all combinations.  
 All fixture configurations subject to final factory approval.  
 Vyv will work with your facility to customize a design for lighting and antimicrobial action.  
 Vyv, Inc. reserves the right to upgrade and improve products without notice.

**SPECIFICATIONS AND DATA SUBJECT TO CHANGE WITHOUT NOTICE**

Updated August 1, 2022

## VSDLD Recessed 4" Downlight Square



**Application:** The Vyv VSDLD provides sleek recessed lighting for a clean look and feel in indoor applications.

**Mode Switching:** Use 'Antimicrobial+Light Mode' when both continuous antimicrobial action and illumination are needed and 'Enhanced Antimicrobial Mode,' which emits a higher dosage of Vyv's antimicrobial wavelengths, as an antimicrobial cleaning mode for when full illumination is not required. See installation instructions (INS-443) for wiring details.

### Product Specifications

**Lens:** Solite LP1 tempered glass lens is standard.

**Trim:** Integrated LED module with Spun Aluminum Reflector. Haze anodized reflector is standard.

**Housing:** Fabricated from stamped and die formed galvanized steel. Supplied with a junction box suitable for through wiring (4in/4out). Sliding light engine for easy service.

**Electrical:** LEDs coupled with high efficiency drivers provide quality illumination. Fixtures supplied with 0-10V dimming down to 1% as standard.

**LED:** Patented Vyv LED package. The range of CCT (correlated color temperature) follows the color uniformity guidelines of the American National Standard regarding specifications for the chromaticity of solid-state lighting (SSL) products as per ANSI C78.377-2017.

**Approvals:** Fixtures are cETLus listed for Damp Location. Wet location optional. EPA Est. 94839-RI-1. Covered by one or more of the following U.S. Patent Numbers: 9,333,274; 9,439,989; 9,713,223; 9,927,097; 10,357,582; 10,753,575



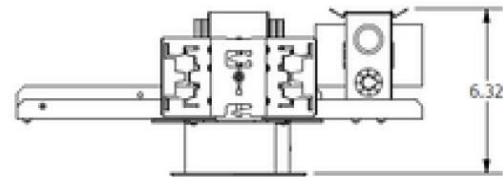
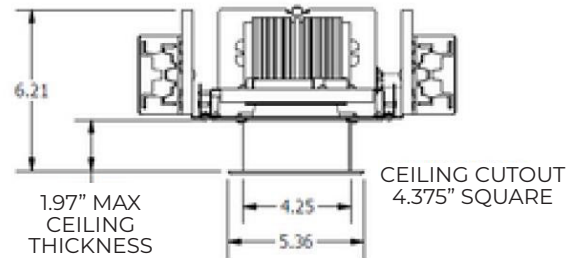
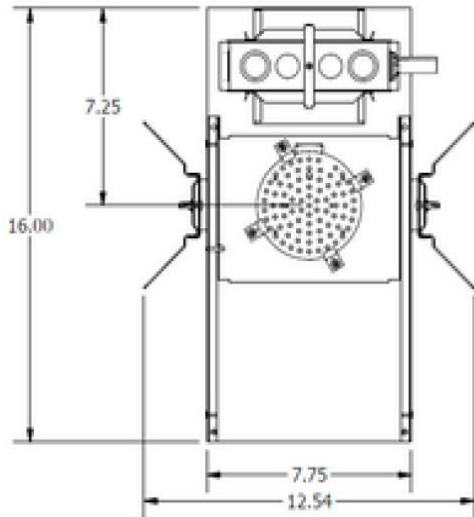
## Ordering

Project: \_\_\_\_\_ Date: \_\_\_\_\_  
 Luminaire Type: \_\_\_\_\_ Approved By: \_\_\_\_\_  
 Product Code: \_\_\_\_\_

Series	Lumens	Features	CCT	Reflector Finish	Lens	Voltage	Options
VSDLD	010				LP1		
	010 1,000lm	<b>N</b> Dual Mode (Antimicrobial+Light Mode & Enhanced Antimicrobial Mode) <b>W</b> Antimicrobial +Light Mode	<b>30</b> 3000K <b>35</b> 3500K <b>40</b> 4000K	<b>FP1</b> Haze (Anodized) Standard <b>FP2</b> White Powder Coat <b>FP3</b> Black Powder Coat <b>FP4</b> Custom Color (Consult Factory)	<b>LP1</b> <b>LP1</b>	<b>120</b> 120V <b>277</b> 277V	<b>Wiring</b> <b>BP</b> In Line Fusing <b>Approval</b> <b>WL</b> Wet Location <b>CRI*</b> <b>90CRI</b> 90 CRI

## Dimensions

Consult installation instructions for exact dimensions.



## Electrical

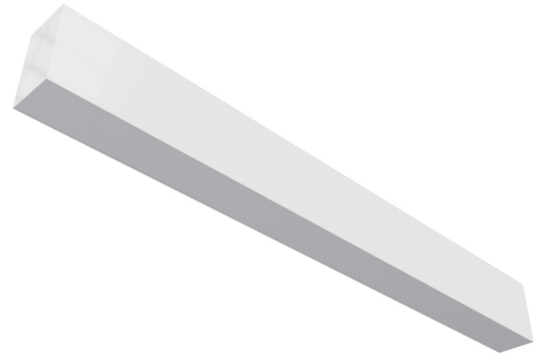
<b>Input Frequency</b>	50/60Hz
<b>Power Factor</b>	>.9
<b>Control</b>	On/Off via standard light switch Antimicrobial+Light Mode to Enhanced Antimicrobial Mode (optional) via low voltage switch or controls.

\*90+CRI reduces lumen output by 20%.  
 Some options may not be available in all combinations.  
 All fixture configurations subject to final factory approval.  
 Vyv will work with your facility to customize a design for lighting and antimicrobial action.  
 Vyv, Inc. reserves the right to upgrade and improve products without notice.

**SPECIFICATIONS AND DATA SUBJECT TO CHANGE WITHOUT NOTICE**

Updated August 1, 2022

## VS3255 Linear Luminaire



**Application:** The Vyv VS3255 Linear Luminaire provides sleek lighting for both individual and continuous runs in indoor applications. Available with multiple mounting options.

**Mode Switching:** Use 'Antimicrobial+Light Mode' when both continuous antimicrobial action and illumination are needed and 'Enhanced Antimicrobial Mode,' which emits a higher dosage of Vyv's antimicrobial wavelengths, as an antimicrobial cleaning mode for when full illumination is not required. See installation instructions (INS-423) for wiring details.

## Product Specifications

**Lens:** Microlinear frosted lens is standard.

**Housing:** The VS3255 is constructed from an extruded aluminum housing with internal components made from die formed cold rolled steel.

**Finish:** White antimicrobial polyester powder coat standard.

**Electrical:** LEDs coupled with high efficiency drivers provide quality illumination. Fixtures supplied with 0-10V dimming down to 1% as standard. Other dimming options are available (Consult Factory).

**LED:** Patented Vyv LED package. The range of CCT (correlated color temperature) follows the color uniformity guidelines of the American National Standard regarding specifications for the chromaticity of solid-state lighting (SSL) products as per ANSI C78.377-2017.

**Approvals:** Fixtures are cETLus listed for Damp Location. EPA Est. 94839-RI-1. Covered by one or more of the following U.S. Patent Numbers: 9,333,274; 9,439,989; 9,713,223; 9,927,097; 10,357,582; 10,753,575



## Ordering

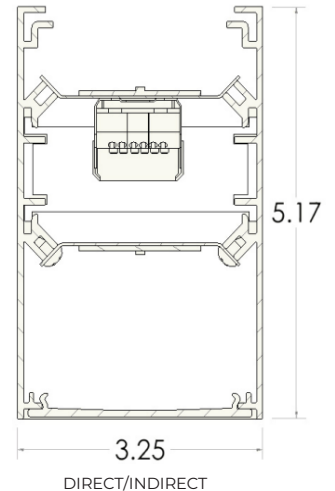
Project: \_\_\_\_\_ Date: \_\_\_\_\_  
 Luminaire Type: \_\_\_\_\_ Approved By: \_\_\_\_\_  
 Product Code: \_\_\_\_\_

Series	Distribution	Mounting	Features	CCT	Size	Diffuser	Finish
VS3255	<b>D</b> Direct	<b>AC</b> Adjustable Aircraft Cable (48" Standard)	<b>N</b> Dual Mode (Antimicrobial+Light Mode & Enhanced Antimicrobial Mode)	<b>30</b> 3000K	<b>2</b> 2'	<b>MFL</b> Microlinear Frosted Lens	<b>WHT</b> White Antimicrobial Polyester Powder Coat
	<b>DI</b> Direct/Indirect**						
		<b>SP</b> Swivel Pendant/Canopy (45°/24" Standard)	<b>W</b> Antimicrobial +Light Mode	<b>40</b> 4000K	<b>4</b> 4'		
		<b>S</b> Surface			<b>5</b> 5'		
		<b>W</b> Wall			<b>6</b> 6'		
		<b>T</b> T-Grid			<b>7</b> 7'		
		<b>FL</b> Flanged			<b>8</b> 8'		
		<b>FM</b> Flangeless (For Mud In)			<b>XX</b> XX' (Specify Row Length)		

Voltage	Options	Indirect Lumens Per Foot	
UNV			
UNV 120/277V	<b>Wiring</b>	<b>ILF035</b> 350	<b>ILF120</b> 1200
	<b>BP</b> In Line Fusing	<b>ILF055</b> 550	<b>ILF145</b> 1450
	<b>Approval</b>	<b>ILF080</b> 800	<b>ILF170</b> 1700
	<b>WL</b> Wet Location	<b>ILF100</b> 1000	<b>ILF220</b> 2200

\*\*Indirect distribution supplied with nonantimicrobial standard white light only and is switched off in enhanced mode. 2' and 3' lengths featuring Dual Mode available with remote driver only.

## Dimensions



Consult Installation instructions for exact dimensions.

Some options may not be available in all combinations. All fixture configurations subject to final factory approval. Vyv will work with your facility to customize a design for lighting and antimicrobial action. Vyv, Inc. reserves the right to upgrade and improve products without notice.

## Electrical

<b>Input Frequency</b>	<b>50/60Hz</b>
<b>Power Factor</b>	<b>&gt;.9</b>
<b>Control</b>	On/Off via standard light switch Antimicrobial+Light Mode to Enhanced Antimicrobial Mode (optional) via low voltage switch or controls.

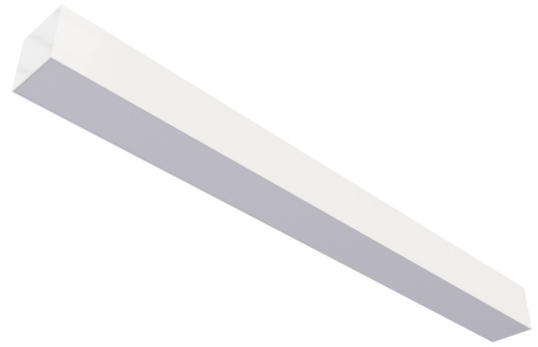
## Performance

<b>Configuration</b>	<b>W</b> Direct
<b>Watts/ft</b>	<b>17.5</b>
<b>Lumens/ft</b>	<b>1,078</b>
<b>Lumens/Watt</b>	<b>62</b>

SPECIFICATIONS AND DATA SUBJECT TO CHANGE WITHOUT NOTICE

Updated August 1, 2022

## VS44 Linear Luminaire



**Application:** The Vyv VS44 Linear Luminaire provides sleek lighting for both individual and continuous runs in indoor applications. Available with multiple mounting options.

**Mode Switching:** Use 'Antimicrobial+Light Mode' when both continuous antimicrobial action and illumination are needed and 'Enhanced Antimicrobial Mode,' which emits a higher dosage of Vyv's antimicrobial wavelengths, as an antimicrobial cleaning mode for when full illumination is not required. See installation instructions (INS-418) for wiring details.

## Product Specifications

**Lens:** Microlinear frosted lens is standard.

**Housing:** The VS44 is constructed from an extruded aluminum housing with internal components made from die formed cold rolled steel.

**Finish:** White antimicrobial polyester powder coat standard.

**Electrical:** LEDs coupled with high efficiency drivers provide quality illumination. Fixtures supplied with 0-10V dimming down to 1% as standard. Other dimming options are available (Consult Factory).

**LED:** Patented Vyv LED package. The range of CCT (correlated color temperature) follows the color uniformity guidelines of the American National Standard regarding specifications for the chromaticity of solid-state lighting (SSL) products as per ANSI C78.377-2017.

**Approvals:** Fixtures are cETLus listed for Damp Location. Wet location optional. EPA Est. 94839-RI-1. Covered by one or more of the following U.S. Patent Numbers: 9,333,274; 9,439,989; 9,713,223; 9,927,097; 10,357,582; 10,753,575



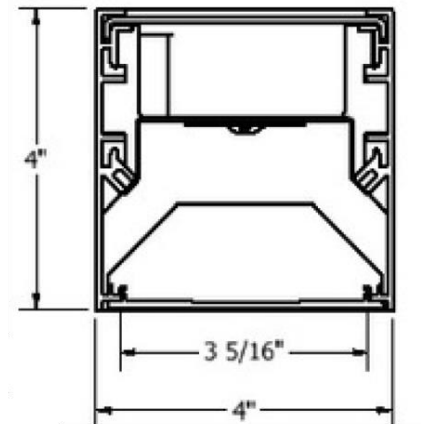
## Ordering

Project: \_\_\_\_\_ Date: \_\_\_\_\_  
 Luminaire Type: \_\_\_\_\_ Approved By: \_\_\_\_\_  
 Product Code: \_\_\_\_\_

Series	Distribution	Mounting	Features	CCT	Size	Diffuser	Finish	
VS44	<b>D</b> Direct (Symmetric) <b>A</b> Direct (Asymmetric)	<b>AC</b> Adjustable Aircraft Cable (48" Standard) <b>P</b> Pendant/ Canopy (24" Standard) <b>SP</b> Swivel Pendant/ Canopy (45°/24" Standard)	<b>N</b> Dual Mode (Antimicrobial+Light Mode & Enhanced Antimicrobial Mode) <b>W</b> Antimicrobial +Light Mode	<b>30</b> 3000K <b>35</b> 3500K <b>40</b> 4000K	<b>2</b> 2' <b>3</b> 3' <b>4</b> 4' <b>5</b> 5' <b>6</b> 6' <b>7</b> 7' <b>8</b> 8' <b>XX</b> XX' (Specify Row Length)	<b>MFL</b> Microlinear Frosted Lens	<b>WHT</b> White Antimicrobial Polyester Powder Coat <b>CA</b> Custom Colors (Consult Factory)	
								<b>S</b> Surface <b>W</b> Wall <b>T</b> T-Grid <b>FL</b> Flanged <b>FM</b> Flangeless (For Mud In)

Voltage	Options
UNV	
UNV 120/277V	<b>Wiring</b> <b>BP</b> In Line Fusing <b>Approval</b> <b>WL</b> Wet Location

## Dimensions *Consult Installation instructions for exact dimensions.*



## Electrical

<b>Input Frequency</b>	50/60Hz
<b>Power Factor</b>	>.9
<b>Control</b>	On/Off via standard light switch Antimicrobial+Light Mode to Enhanced Antimicrobial Mode (optional) via low voltage switch or controls.

## Performance

<b>Watts/ft</b>	17.5
<b>Lumens/ft</b>	1,078
<b>Lumens/Watt</b>	62

Some options may not be available in all combinations. All fixture configurations subject to final factory approval.

Vyv will work with your facility to customize a design for lighting and antimicrobial action. Vyv, Inc. reserves the right to upgrade and improve products without notice.

**SPECIFICATIONS AND DATA SUBJECT TO CHANGE WITHOUT NOTICE**

Updated August 1, 2022



## VS46 Linear Luminaire



**Application:** The Vyv VS46 Linear Luminaire provides sleek lighting for both individual and continuous runs in indoor applications. Available with multiple mounting options.

**Mode Switching:** Use 'Antimicrobial+Light Mode' when both continuous antimicrobial action and illumination are needed and 'Enhanced Antimicrobial Mode,' which emits a higher dosage of Vyv's antimicrobial wavelengths, as an antimicrobial cleaning mode for when full illumination is not required. See installation instructions (INS-422) for wiring details.

## Product Specifications

**Lens:** Microlinear frosted lens is standard.

**Housing:** The VS46 is constructed from an extruded aluminum housing with internal components made from die formed cold rolled steel.

**Finish:** White antimicrobial polyester powder coat standard.

**Electrical:** LEDs coupled with high efficiency drivers provide quality illumination. Fixtures supplied with 0-10V dimming down to 1% as standard. Other dimming options are available (Consult Factory).

**LED:** Patented Vyv LED package. The range of CCT (correlated color temperature) follows the color uniformity guidelines of the American National Standard regarding specifications for the chromaticity of solid-state lighting (SSL) products as per ANSI C78.377-2017.

**Approvals:** Fixtures are cETLus listed for Damp Location. Wet location optional. EPA Est. 94839-RI-1. Covered by one or more of the following U.S. Patent Numbers: 9,333,274; 9,439,989; 9,713,223; 9,927,097; 10,357,582; 10,753,575



## Ordering

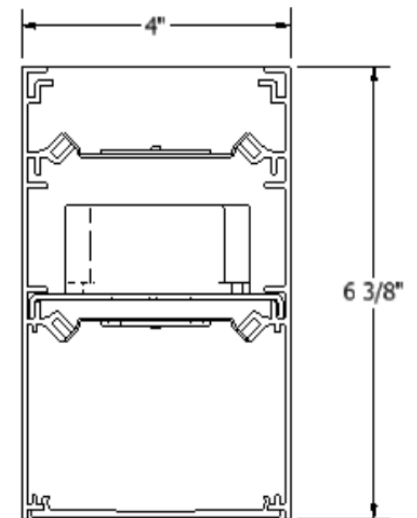
Project: \_\_\_\_\_ Date: \_\_\_\_\_  
 Luminaire Type: \_\_\_\_\_ Approved By: \_\_\_\_\_  
 Product Code: \_\_\_\_\_

Series	Distribution	Mounting	Features	CCT	Size	Diffuser	Finish
VS46						MFL	
	<b>D</b> Direct (Symmetric)	<b>AC</b> Adjustable Aircraft Cable (48" Standard)	<b>N</b> Dual Mode (Antimicrobial+Light Mode & Enhanced Antimicrobial Mode)	<b>30</b> 3000K	<b>2</b> 2'	<b>MFL</b> Microlinear Frosted Lens	<b>WHT</b> White Antimicrobial Polyester Powder Coat
	<b>A</b> Direct (Asymmetric)			<b>35</b> 3500K	<b>3</b> 3'		
	<b>DI</b> Direct (Symmetric)/ Indirect**			<b>40</b> 4000K	<b>4</b> 4'		
	<b>AI</b> Direct (Asymmetric)/ Indirect**	<b>P</b> Pendant/ Canopy (24" Standard)	<b>W</b> Antimicrobial +Light Mode	<b>5</b> 5'	<b>5</b> 5'		
				<b>6</b> 6'	<b>6</b> 6'		
	<b>AI</b> Direct (Asymmetric)/ Indirect**	<b>SP</b> Swivel Pendant/ Canopy (45°/24" Standard)		<b>7</b> 7'	<b>7</b> 7'		
				<b>8</b> 8'	<b>8</b> 8'		
				<b>XX</b> XX'	<b>XX</b> XX'		
				<b>(Specify Row Length)</b>			
		<b>S</b> Surface					
	<b>W</b> Wall						

Voltage	Options	Indirect Lumens Per Foot
UNV		
UNV 120/277V	<b>Wiring</b>	<b>ILF035</b> 350 <b>ILF120</b> 1200
	<b>BP</b> In Line Fusing	<b>ILF055</b> 550 <b>ILF145</b> 1450
	<b>Approval</b>	<b>ILF080</b> 800 <b>ILF170</b> 1700
	<b>WL</b> Wet Location	<b>ILF100</b> 1000 <b>ILF220</b> 2200

\*\*Indirect distribution supplied with nonantimicrobial standard white light only and is switched off in enhanced mode. 2' and 3' lengths featuring Dual Mode available with remote driver only.

## Dimensions



Consult Installation instructions for exact dimensions.

## Electrical

<b>Input Frequency</b>	50/60Hz
<b>Power Factor</b>	>.9
<b>Control</b>	On/Off via standard light switch Antimicrobial+Light Mode to Enhanced Antimicrobial Mode (optional) via low voltage switch or controls.

## Performance

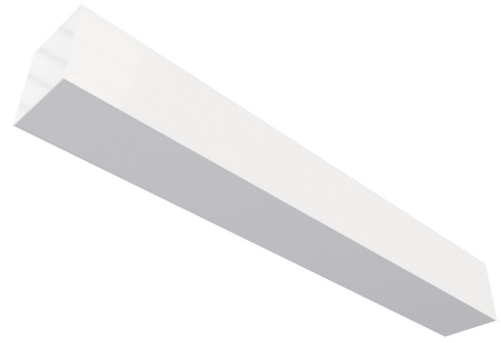
<b>Configuration</b>	<b>W</b> Direct
<b>Watts/ft</b>	<b>17.5</b>
<b>Lumens/ft</b>	<b>1,078</b>
<b>Lumens/Watt</b>	<b>62</b>

Some options may not be available in all combinations. All fixture configurations subject to final factory approval. Vyv will work with your facility to customize a design for lighting and antimicrobial action. Vyv, Inc. reserves the right to upgrade and improve products without notice.

SPECIFICATIONS AND DATA SUBJECT TO CHANGE WITHOUT NOTICE

Updated August 1, 2022

## VS66 Linear Luminaire



**Application:** The Vyv VS66 Linear Luminaire provides sleek lighting for both individual and continuous runs in indoor applications. Available with multiple mounting options.

**Mode Switching:** Use 'Antimicrobial+Light Mode' when both continuous antimicrobial action and illumination are needed and 'Enhanced Antimicrobial Mode,' which emits a higher dosage of Vyv's antimicrobial wavelengths, as an antimicrobial cleaning mode for when full illumination is not required. See installation instructions (INS-421) for wiring details.

## Product Specifications

**Lens:** Microlinear frosted lens is standard.

**Housing:** The VS66 is constructed from an extruded aluminum housing with internal components made from die formed cold rolled steel.

**Finish:** White antimicrobial polyester powder coat standard.

**Electrical:** LEDs coupled with high efficiency drivers provide quality illumination. Fixtures supplied with 0-10V dimming down to 1% as standard. Other dimming options are available (Consult Factory).

**LED:** Patented Vyv LED package. The range of CCT (correlated color temperature) follows the color uniformity guidelines of the American National Standard regarding specifications for the chromaticity of solid-state lighting (SSL) products as per ANSI C78.377-2017.

**Approvals:** Fixtures are cETLus listed for Damp Location. Wet location optional. EPA Est. 94839-RI-1. Covered by one or more of the following U.S. Patent Numbers: 9,333,274; 9,439,989; 9,713,223; 9,927,097; 10,357,582; 10,753,575



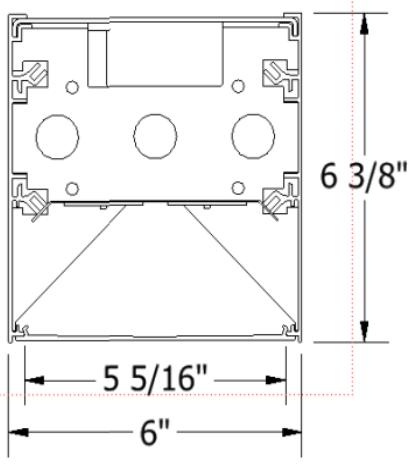
## Ordering

Project: \_\_\_\_\_ Date: \_\_\_\_\_  
 Luminaire Type: \_\_\_\_\_ Approved By: \_\_\_\_\_  
 Product Code: \_\_\_\_\_

Series	Distribution	Mounting	Features	CCT	Size	Diffuser	Finish
VS66						MFL	
	<b>D</b> Direct	<b>AC</b> Adjustable Aircraft Cable (48" Standard)	<b>N</b> Dual Mode (Antimicrobial+Light Mode & Enhanced Antimicrobial Mode)	<b>30</b> 3000K	<b>2</b> 2'	<b>MFL</b> Microlinear Frosted Lens	<b>WHT</b> White Antimicrobial Polyester Powder Coat
	<b>DI</b> Direct/ Indirect**	<b>P</b> Pendant/ Canopy (24" Standard)		<b>35</b> 3500K	<b>3</b> 3'		
		<b>SP</b> Swivel Pendant/ Canopy (45°/24" Standard)	<b>W</b> Antimicrobial +Light Mode	<b>40</b> 4000K	<b>4</b> 4'		
		<b>S</b> Surface		<b>5</b> 5'			
		<b>W</b> Wall		<b>6</b> 6'			
		<b>T</b> T-Grid		<b>7</b> 7'			
		<b>FL</b> Flanged		<b>8</b> 8'			
		<b>FM</b> Flangeless (For Mud In)		<b>XX</b> XX' (Specify Row Length)			

Voltage	Options	Indirect Lumens Per Foot			
UNV					
UNV 120/277V	<b>Wiring</b>	<b>ILF035</b>	350	<b>ILF120</b>	1200
	<b>BP</b> In Line Fusing	<b>ILF055</b>	550	<b>ILF145</b>	1450
	<b>Approval</b>	<b>ILF080</b>	800	<b>ILF170</b>	1700
	<b>WL</b> Wet Location	<b>ILF100</b>	1000	<b>ILF220</b>	2200

### Dimensions



Consult Installation instructions for exact dimensions.

\*\*Indirect distribution supplied with nonantimicrobial standard white light only and is switched off in enhanced mode.

### Electrical

<b>Input Frequency</b>	50/60Hz
<b>Power Factor</b>	>.9
<b>Control</b>	On/Off via standard light switch Antimicrobial+Light Mode to Enhanced Antimicrobial Mode (optional) via low voltage switch or controls.

### Performance

<b>Configuration</b>	W Direct
<b>Watts/ft</b>	17.5
<b>Lumens/ft</b>	1,078
<b>Lumens/Watt</b>	62

Some options may not be available in all combinations. All fixture configurations subject to final factory approval. Vyv will work with your facility to customize a design for lighting and antimicrobial action. Vyv, Inc. reserves the right to upgrade and improve products without notice.

SPECIFICATIONS AND DATA SUBJECT TO CHANGE WITHOUT NOTICE

Updated August 1, 2022

## VS72 Linear Luminaire



**Application:** The Vyv VS72 Linear Luminaire provides sleek lighting with multiple mounting options for indoor applications.

**Mode Switching:** Use 'Antimicrobial+Light Mode' when both continuous antimicrobial action and illumination are needed and 'Enhanced Antimicrobial Mode,' which emits a higher dosage of Vyv's antimicrobial wavelengths, as an antimicrobial cleaning mode for when full illumination is not required. See installation instructions (INS-419) for wiring details.

## Product Specifications

**Lens:** Microlinear frosted lens is standard. Available in Round or Square.

**Housing:** The VS72 is constructed from die formed cold rolled steel.

**Finish:** White Antimicrobial Polyester Powder Coat Standard.

**Electrical:** LEDs coupled with high efficiency drivers provide quality illumination. Fixtures supplied with 0-10V dimming down to 1% as standard. Other dimming options are available (Consult Factory).

**LED:** Patented Vyv LED package. The range of CCT (correlated color temperature) follows the color uniformity guidelines of the American National Standard regarding specifications for the chromaticity of solid-state lighting (SSL) products as per ANSI C78.377-2017.

**Approvals:** Fixtures are cETLus listed for Damp Location. EPA Est. 94839-RI-1. Covered by one or more of the following U.S. Patent Numbers: 9,333,274; 9,439,989; 9,713,223; 9,927,097; 10,357,582; 10,753,575



## Ordering

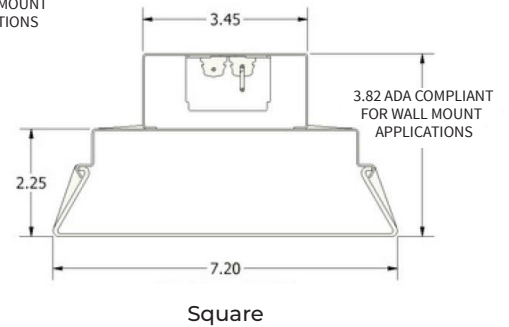
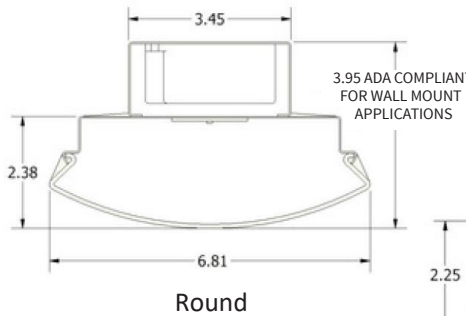
Project: \_\_\_\_\_ Date: \_\_\_\_\_  
 Luminaire Type: \_\_\_\_\_ Approved By: \_\_\_\_\_  
 Product Code: \_\_\_\_\_

Series	Distribution	Mounting	Features	CCT	Size	Diffuser	Finish
VS72	D Direct	AC Adjustable Aircraft Cable (48" Standard)	<b>N</b> Dual Mode (Antimicrobial+Light Mode & Enhanced Antimicrobial Mode) <b>W</b> Antimicrobial +Light Mode	30 3000K	2 2'	<b>R</b> Round <b>S</b> Square	<b>WHT</b> White Antimicrobial Polyester Powder Coat <b>CA</b> Custom Colors (Consult Factory)
				35 3500K	3 3'		
				40 4000K	4 4'		
		P Pendant / Canopy (24" Standard)					
		SP Swivel Pendant / Canopy (45°/24" Standard)					
		S Surface					
		W Wall					

Voltage	Options
UNV	
UNV 120/277V	<b>Wiring</b> <b>BP</b> In Line Fusing

## Dimensions

Consult installation instructions for exact dimensions.



## Electrical

Input Frequency	50/60Hz
Power Factor	>.9
Control	On/Off via standard light switch Antimicrobial+Light Mode to Enhanced Antimicrobial Mode (optional) via low voltage switch or controls.

## Performance

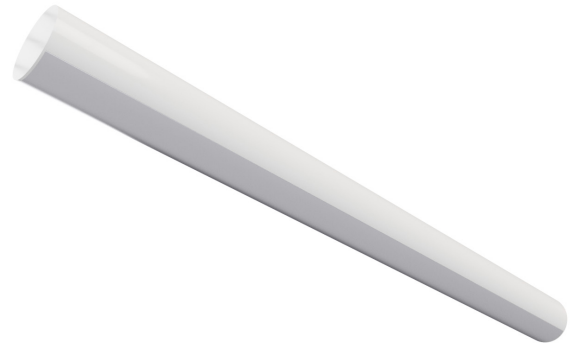
Watts/ft	17.5
Lumens/ft	1,078
Lumens/Watt	62

Contact factory for custom sizes.  
 Some options may not be available in all combinations.  
 All fixture configurations subject to final factory approval.  
 Vyv will work with your facility to customize a design for lighting and antimicrobial action.  
 Vyv, Inc. reserves the right to upgrade and improve products without notice.

SPECIFICATIONS AND DATA SUBJECT TO CHANGE WITHOUT NOTICE

Updated November 14, 2022

## VSC4 Linear Round Luminaire



**Application:** The Vyv VSC4 Linear Round Luminaire provides sleek lighting for both individual and continuous runs in indoor applications. Available with multiple mounting options.

**Mode Switching:** Use 'Antimicrobial+Light Mode' when both continuous antimicrobial action and illumination are needed and 'Enhanced Antimicrobial Mode,' which emits a higher dosage of Vyv's antimicrobial wavelengths, as an antimicrobial cleaning mode for when full illumination is not required. See installation instructions (INS-425) for wiring details.

### Product Specifications

**Lens:** Microlinear frosted lens is standard.

**Housing:** The VSC4 is constructed from an extruded aluminum housing with internal components made from die formed cold rolled steel.

**Finish:** White antimicrobial polyester powder coat standard.

**Electrical:** LEDs coupled with high efficiency drivers provide quality illumination. Fixtures supplied with 0-10V dimming down to 1% as standard. Other dimming options are available (Consult Factory).

**LED:** Patented Vyv LED package. The range of CCT (correlated color temperature) follows the color uniformity guidelines of the American National Standard regarding specifications for the chromaticity of solid-state lighting (SSL) products as per ANSI C78.377-2017.

**Approvals:** Fixtures are cETLus listed for Damp Location. EPA Est. 94839-RI-1. Covered by one or more of the following U.S. Patent Numbers: 9,333,274; 9,439,989; 9,713,223; 9,927,097; 10,357,582; 10,753,575



## Ordering

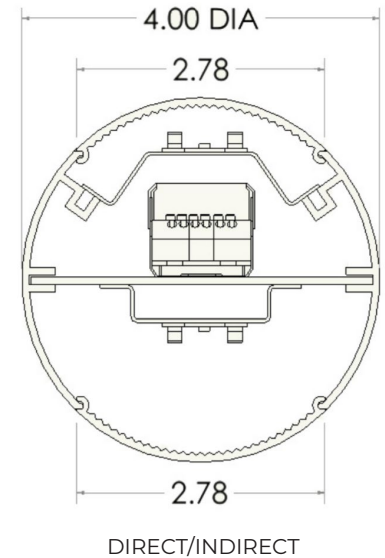
Project: \_\_\_\_\_ Date: \_\_\_\_\_  
 Luminaire Type: \_\_\_\_\_ Approved By: \_\_\_\_\_  
 Product Code: \_\_\_\_\_

Series	Distribution	Mounting	Features	CCT	Size	Diffuser	Finish
VSC4						MFL	
	<b>D</b> Direct <b>DI</b> Direct/ Indirect**	<b>AC</b> Adjustable Aircraft Cable (48" Standard) <b>P</b> Pendant/ Canopy (24" Standard) <b>SP</b> Swivel Pendant/ Canopy (45°/24" Standard) <b>W</b> Wall	<b>N</b> Dual Mode (Antimicrobial+Light Mode & Enhanced Antimicrobial Mode) <b>W</b> Antimicrobial +Light Mode	<b>30</b> 3000K <b>35</b> 3500K <b>40</b> 4000K	<b>2</b> 2' <b>3</b> 3' <b>4</b> 4' <b>5</b> 5' <b>6</b> 6' <b>7</b> 7' <b>8</b> 8' <b>XX</b> XX' (Specify Row Length)	<b>MFL</b> Microlinear Frosted Lens	<b>WHT</b> White Antimicrobial Polyester Powder Coat <b>CA</b> Custom Colors (Consult Factory)

Voltage	Options	Indirect Lumens Per Foot
UNV		
UNV 120/277V	<b>Wiring</b> <b>BP</b> In Line Fusing	<b>ILF035</b> 350 <b>ILF120</b> 1200 <b>ILF055</b> 550 <b>ILF145</b> 1450 <b>ILF080</b> 800 <b>ILF170</b> 1700 <b>ILF100</b> 1000 <b>ILF220</b> 2200

\*\*Indirect distribution supplied with nonantimicrobial standard white light only and is switched off in enhanced mode. 2' and 3' lengths featuring Dual Mode available with remote driver only.

## Dimensions



Consult Installation instructions for exact dimensions.

## Electrical

<b>Input Frequency</b>	50/60Hz
<b>Power Factor</b>	>.9
<b>Control</b>	On/Off via standard light switch Antimicrobial+Light Mode to Enhanced Antimicrobial Mode (optional) via low voltage switch or controls.

## Performance

<b>Configuration</b>	W Direct
<b>Watts/ft</b>	17.5
<b>Lumens/ft</b>	1,078
<b>Lumens/Watt</b>	62

Some options may not be available in all combinations. All fixture configurations subject to final factory approval. Vyv will work with your facility to customize a design for lighting and antimicrobial action. Vyv, Inc. reserves the right to upgrade and improve products without notice.

SPECIFICATIONS AND DATA SUBJECT TO CHANGE WITHOUT NOTICE

Updated August 1, 2022



## VSC6 Linear Round Luminaire



**Application:** The Vyv VSC6 Linear Round Luminaire provides sleek lighting for both individual and continuous runs in indoor applications. Available with multiple mounting options.

**Mode Switching:** Use 'Antimicrobial+Light Mode' when both continuous antimicrobial action and illumination are needed and 'Enhanced Antimicrobial Mode,' which emits a higher dosage of Vyv's antimicrobial wavelengths, as an antimicrobial cleaning mode for when full illumination is not required. See installation instructions (INS-424) for wiring details.

## Product Specifications

**Lens:** Microlinear frosted lens is standard.

**Housing:** The VSC6 is constructed from an extruded aluminum housing with internal components made from die formed cold rolled steel.

**Finish:** White antimicrobial polyester powder coat standard.

**Electrical:** LEDs coupled with high efficiency drivers provide quality illumination. Fixtures supplied with 0-10V dimming down to 1% as standard. Other dimming options are available (Consult Factory).

**LED:** Patented Vyv LED package. The range of CCT (correlated color temperature) follows the color uniformity guidelines of the American National Standard regarding specifications for the chromaticity of solid-state lighting (SSL) products as per ANSI C78.377-2017.

**Approvals:** Fixtures are cETLus listed for Damp Location. EPA Est. 94839-RI-1. Covered by one or more of the following U.S. Patent Numbers: 9,333,274; 9,439,989; 9,713,223; 9,927,097; 10,357,582; 10,753,575



## Ordering

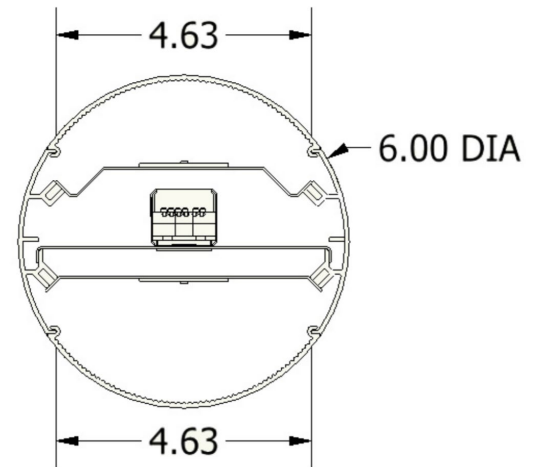
Project: \_\_\_\_\_ Date: \_\_\_\_\_  
 Luminaire Type: \_\_\_\_\_ Approved By: \_\_\_\_\_  
 Product Code: \_\_\_\_\_

Series	Distribution	Mounting	Features	CCT	Size	Diffuser	Finish
VSC6						MFL	
	<b>D</b> Direct <b>DI</b> Direct/ Indirect**	<b>AC</b> Adjustable Aircraft Cable (48" Standard) <b>P</b> Pendant/ Canopy (24" Standard) <b>SP</b> Swivel Pendant/ Canopy (45°/24" Standard) <b>W</b> Wall	<b>N</b> Dual Mode (Antimicrobial+Light Mode & Enhanced Antimicrobial Mode) <b>W</b> Antimicrobial +Light Mode	<b>30</b> 3000K <b>35</b> 3500K <b>40</b> 4000K	<b>2</b> 2' <b>3</b> 3' <b>4</b> 4' <b>5</b> 5' <b>6</b> 6' <b>7</b> 7' <b>8</b> 8' <b>XX</b> XX' (Specify Row Length)	<b>MFL</b> Microlinear Frosted Lens	<b>WHT</b> White Antimicrobial Polyester Powder Coat <b>CA</b> Custom Colors (Consult Factory)

Voltage	Options	Indirect Lumens Per Foot																
UNV																		
UNV 120/277V	<b>Wiring</b> <b>BP</b> In Line Fusing	<table border="0"> <tr> <td><b>ILF035</b></td> <td>350</td> <td><b>ILF120</b></td> <td>1200</td> </tr> <tr> <td><b>ILF055</b></td> <td>550</td> <td><b>ILF145</b></td> <td>1450</td> </tr> <tr> <td><b>ILF080</b></td> <td>800</td> <td><b>ILF170</b></td> <td>1700</td> </tr> <tr> <td><b>ILF100</b></td> <td>1000</td> <td><b>ILF220</b></td> <td>2200</td> </tr> </table>	<b>ILF035</b>	350	<b>ILF120</b>	1200	<b>ILF055</b>	550	<b>ILF145</b>	1450	<b>ILF080</b>	800	<b>ILF170</b>	1700	<b>ILF100</b>	1000	<b>ILF220</b>	2200
<b>ILF035</b>	350	<b>ILF120</b>	1200															
<b>ILF055</b>	550	<b>ILF145</b>	1450															
<b>ILF080</b>	800	<b>ILF170</b>	1700															
<b>ILF100</b>	1000	<b>ILF220</b>	2200															

\*\*Indirect distribution supplied with nonantimicrobial standard white light only and is switched off in enhanced mode.

## Dimensions



DIRECT/INDIRECT

Consult Installation instructions for exact dimensions.

## Electrical

<b>Input Frequency</b>	50/60Hz
<b>Power Factor</b>	>.9
<b>Control</b>	On/Off via standard light switch Antimicrobial+Light Mode to Enhanced Antimicrobial Mode (optional) via low voltage switch or controls.

## Performance

<b>Configuration</b>	W Direct
<b>Watts/ft</b>	17.5
<b>Lumens/ft</b>	1,078
<b>Lumens/Watt</b>	62

Some options may not be available in all combinations. All fixture configurations subject to final factory approval. Vyv will work with your facility to customize a design for lighting and antimicrobial action. Vyv, Inc. reserves the right to upgrade and improve products without notice.

SPECIFICATIONS AND DATA SUBJECT TO CHANGE WITHOUT NOTICE

Updated August 1, 2022

## V3095 Perimeter Luminaire



**Application:** The Vyv V3095 Perimeter Luminaire provides lighting for both individual and continuous runs in indoor recessed perimeter applications available for T-Grid and Flanged mounting.

**Mode Switching:** Use 'Antimicrobial+Light Mode' when both continuous antimicrobial action and illumination are needed and 'Enhanced Antimicrobial Mode,' which emits a higher dosage of Vyv's antimicrobial wavelengths, as an antimicrobial cleaning mode for when full illumination is not required. See installation instructions (INS-461) for wiring details.

## Product Specifications

**Lens:** Microlinear frosted lens is standard.

**Housing:** The V3095 is constructed from an extruded aluminum housing with internal components made from die formed cold rolled steel.

**Finish:** White antimicrobial polyester powder coat standard.

**Electrical:** LEDs coupled with high efficiency drivers provide quality illumination. Fixtures supplied with 0-10V dimming down to 1% as standard. Other dimming options are available (Consult Factory).

**LED:** Patented Vyv LED package. The range of CCT (correlated color temperature) follows the color uniformity guidelines of the American National Standard regarding specifications for the chromaticity of solid-state lighting (SSL) products as per ANSI C78.377-2017.

**Approvals:** Fixtures are cETLus listed for Damp Location. EPA Est. 94839-RI-1. Covered by one or more of the following U.S. Patent Numbers: 9,333,274; 9,439,989; 9,713,223; 9,927,097; 10,357,582; 10,753,575



## Ordering

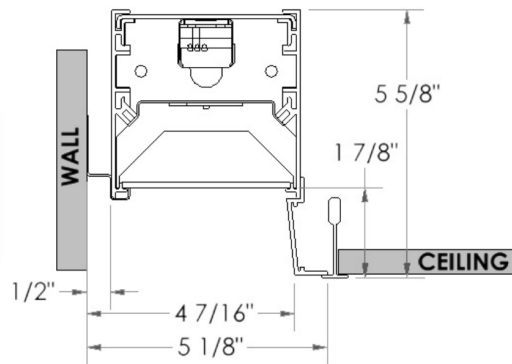
Project: \_\_\_\_\_ Date: \_\_\_\_\_  
 Luminaire Type: \_\_\_\_\_ Approved By: \_\_\_\_\_  
 Product Code: \_\_\_\_\_

Series	Mounting	Features	CCT	Size	Diffuser	Finish	Voltage
V3095	<b>T</b> T-Grid	<b>N</b> Dual Mode (Antimicrobial+Light Mode & Enhanced Antimicrobial Mode) <b>W</b> Antimicrobial +Light Mode	<b>30</b> 3000K <b>35</b> 3500K <b>40</b> 4000K	<b>2</b> 2' <b>3</b> 3' <b>4</b> 4' <b>5</b> 5' <b>6</b> 6' <b>7</b> 7' <b>8</b> 8' <b>XX</b> XX' (Specify Row Length)	<b>MFL</b> <b>MFL</b> Microlinear Frosted Lens	<b>WHT</b> White Antimicrobial Polyester Powder Coat <b>CA</b> Custom Colors (Consult Factory)	<b>UNV</b>
	<b>FL</b> Flanged						<b>UNV</b> 120/277V

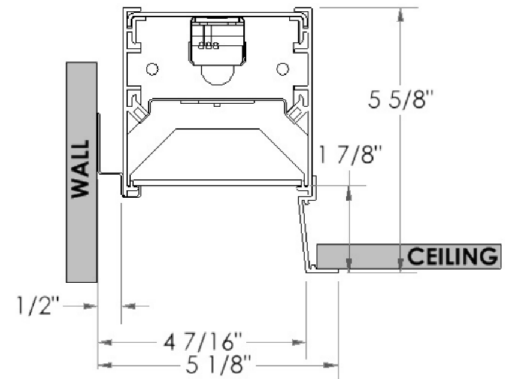
Options	
<b>Wiring</b>	
<b>BP</b>	In Line Fusing

## Dimensions

Consult Installation instructions for exact dimensions.



T-GRID



FLANGED

(FIXTURE SUPPORTED  
 BY THREADED ROD  
 NOT INCLUDED/BY OTHERS)

## Electrical

<b>Input Frequency</b>	50/60Hz
<b>Power Factor</b>	>.9
<b>Control</b>	On/Off via standard light switch Antimicrobial+Light Mode to Enhanced Antimicrobial Mode (optional) via low voltage switch or controls.

## Performance

<b>Watts/ft</b>	17.5
<b>Lumens/ft</b>	1,078
<b>Lumens/Watt</b>	62

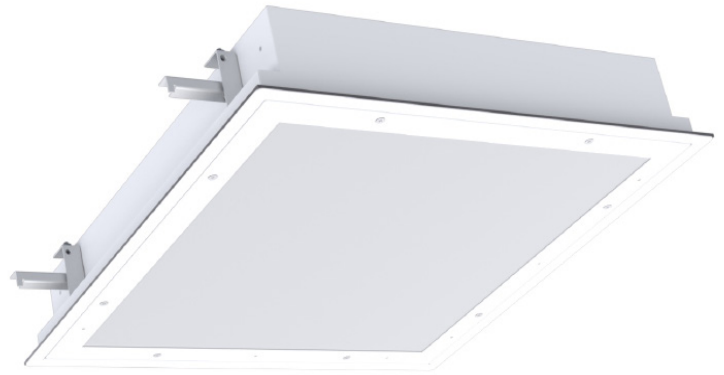
Some options may not be available in all combinations. All fixture configurations subject to final factory approval.

Vyv will work with your facility to customize a design for lighting and antimicrobial action. Vyv, Inc. reserves the right to upgrade and improve products without notice.

**SPECIFICATIONS AND DATA SUBJECT TO CHANGE WITHOUT NOTICE**

Updated August 1, 2022

## VSG Surgical/Cleanroom Troffer



**Application:** The Vyv VSG Surgical/Cleanroom Troffer provides supplemental lighting for surgical/operating rooms. Commonly located above the table perimeter, the VSG is a triple gasketed shallow design for recessed mounting in surgical ceiling systems as well as grid and flanged installations with room side access to all electrical components.

**Mode Switching:** Use 'Antimicrobial+Light Mode' when both continuous antimicrobial action and illumination are needed and 'Enhanced Antimicrobial Mode,' which emits a higher dosage of Vyv's antimicrobial wavelengths, as an antimicrobial cleaning mode for when full illumination is not required. See installation instructions (INS-400) for wiring details.

### Product Specifications

**Housing:** Precision formed; hole-free seam welded 20 gauge cold rolled steel housing. One standard 1/2" trade-size conduit entrance hole. Closed cell neoprene gasket provided to seal flange to ceiling.

**Door Frame:** One-piece door frame, fabricated from 20 gauge, cold rolled steel with TIG welded corners. Countersunk flat head, stainless steel, captive fasteners with integral silicone o-rings. Door frame is removable, reversible, and hinged by stainless steel aircraft cables. Highly resilient and chemical resistant CertaSeal microcellular closed-cell gasket seals door frame to housing.

**Finish:** Antimicrobial gloss white polyester powder coat finish with a 5-stage pretreatment.

**Mounting:** Flange installation is supported by swing style mounting brackets with a range of 1.3-2.9". See options accessories when a range of 3.3-4.9" is required. Grid installation suitable for 1" and 1.5" T-bar ceilings. See options housing for additional 2" T-Bar support.

**Lens:** High diffusion, smooth impact resistant 0.125" thick frosted acrylic lens provides symmetric distribution. Radiated emissions (RE101) mitigated below MIL STD 461G limits by use of special filters and secondary circuit design elements. Lens sealed to door frame with silicone sealant. Other lens options available.

**Electrical:** High efficiency (>85%) and low THD (<10%) constant current driver with low-voltage dimming (0-10v, 1%). Certified to MIL STD 461G for conducted emissions as well as FCC Part 15.

**LED:** Patented Vyv LED package. The range of CCT (correlated color temperature) follows the color uniformity guidelines of the American National Standard regarding specifications for the chromaticity of solid-state lighting (SSL) products as per ANSI C78.377-2017.

**Approvals:** UL listed for insulated ceilings and wet location. Certified IP65 and Certified NSF2. MIL STD 461G Certified. Cleanroom class ISO3-8. EPA Est. 94831-CAN-1. Covered by one or more of the following U.S. Patent Numbers: 9,333,274; 9,439,989; 9,713,223; 9,927,097; 10,357,582; 10,753,575



## Ordering

Project: \_\_\_\_\_ Date: \_\_\_\_\_  
 Luminaire Type: \_\_\_\_\_ Approved By: \_\_\_\_\_  
 Product Code: \_\_\_\_\_

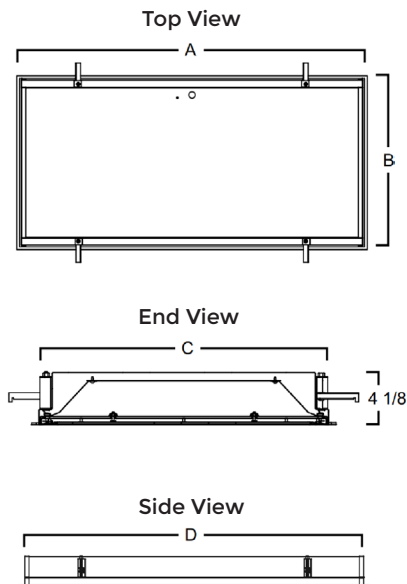
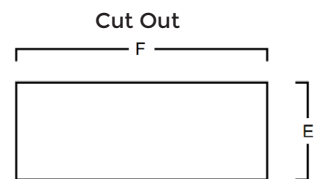
Series	Size	CRI*	CCT	Lumens	Voltage	Features	Finish	Door Style
VSG					UNV		ABF	
	<b>14</b> 1'x4'	<b>80</b> 80 CRI	<b>30</b> 3000K	<b>1'x4'</b>	<b>UNV</b> 120-277V	<b>N</b> Dual Mode (Antimicrobial+Light Mode & Enhanced Antimicrobial Mode)  <b>W</b> Antimicrobial +Light Mode	<b>ABF</b> Gloss White Antimicrobial	<b>I</b> Inset <b>O</b> Overlapping
	<b>22</b> 2'x2'	<b>90</b> 90 CRI	<b>35</b> 3500K	<b>05</b> 5,000lm				
	<b>24</b> 2'x4'		<b>40</b> 4000K	<b>07</b> 7,000lm				
				<b>2'x2'</b> <b>05</b> 5,000lm <b>07</b> 7,000lm <b>2'x4'</b> <b>10</b> 10,000lm <b>14</b> 14,000lm				

Options	
<b>Driver</b>	
<b>EBP</b>	Emergency Lighting Battery Pack
<b>Lens</b>	
<b>L106</b>	Symmetric/Asymmetric Acrylic Lens
<b>L13</b>	0.125" Prismatic Acrylic (Pattern #12, Inverted)
<b>Construction</b>	
<b>C119</b>	Plenum Access Panel (Gasketed)
<b>TBAR2</b>	Housing for 2-inch T-Bar
<b>Accessories</b>	
<b>M70</b>	Install Frame (Plaster Ceilings)
<b>M46</b>	Continuous Row Mounting (Flanged Applications)
<b>M62</b>	Extended Swing Brackets Range 3.3-4.9" (Inset Door Style)
<b>Approvals</b>	
<b>X5</b>	NSF Food Zone-Non-contact
<b>Finish</b>	
<b>C77</b>	White Stainless Steel Door Screws

## Dimensions

Consult installation instructions for exact dimensions.

Size	A	B	C	D	E	F
1'x4'	47 3/4"	11 3/4"	10 11/16"	46 3/4"	10 11/16"	46 3/4"
2'x2'	23 3/4"	23 3/4"	22 11/16"	22 7/8"	22 11/16"	22 7/8"
2'x4'	47 3/4"	23 3/4"	22 11/16"	46 3/4"	22 11/16"	46 3/4"



## Performance

Size	Lumens	CRI	Watts
1'x4'	5,000	80	85
2'x2'	5,000	80	85
2'x4'	10,000	80	170

## Electrical

<b>Input Frequency</b>	50/60Hz
<b>Power Factor</b>	>.9
<b>Control</b>	On/Off via standard light switch Antimicrobial+Light Mode to Enhanced Antimicrobial Mode (optional) via low voltage switch or controls.

\*90+CRI reduces lumen output by 20%.  
 Vyv will work with your facility to customize a design for lighting and antimicrobial action. Vyv, Inc. reserves the right to upgrade and improve products without notice.

SPECIFICATIONS AND DATA SUBJECT TO CHANGE WITHOUT NOTICE

Updated February 28, 2022

## VSM Medical Patient Ambient Luminaire



**Application:** The Vyv VSM Medical Patient Ambient Luminaire is a specification-grade, luminaire which provides a patient room lighting solution. Designed as a sealed ambient light for hospitals, nursing homes and other patient care facilities. Adding the optional IP65 certification also brings a cleanroom rating of ISO5 for use in protective environments and isolation rooms.

**Mode Switching:** Use 'Antimicrobial+Light Mode' when both continuous antimicrobial action and illumination are needed and 'Enhanced Antimicrobial Mode,' which emits a higher dosage of Vyv's antimicrobial wavelengths, as an antimicrobial cleaning mode for when full illumination is not required. See installation instructions (INS-409) for wiring details.

## Product Specifications

**Housing:** Precision formed, code gauge cold rolled steel. Wiring access plate or knockouts are provided on back of housing, for flexible conduit attachment.

### Mounting:

Grid Mount - holes provided for chain mounting support to building structure, and comes with integral earthquake clips.

Flange Mount - yoke mounting bracket (see product code).

**Lens:** Linear prismatic extruded frosted acrylic diffuser offer high levels of efficiency and visual comfort. The single piece 16ga aluminum door frame with .125" clear acrylic lens is sealed and gasketed for easy cleaning.

**Finish:** Antimicrobial gloss white polyester powder coat finish with a 5-stage pre-treatment offers a high reflectivity coating for improved performance and efficiency.

**Electrical:** Long life LED's coupled with high efficiency drivers provide quality illumination. The standard driver comes standard with 0-10v dimming and has a THD of <10%. All electrical components are UL approved.

**LED:** Patented Vyv LED package. The range of CCT (correlated color temperature) follows the color uniformity guidelines of the American National Standard regarding specifications for the chromaticity of solid-state lighting (SSL) products as per ANSI C78.377-2017.

**Approvals:** Approved to UL standards. Suitable for Damp Location. EPA Est. 94831-CAN-1. Covered by one or more of the following U.S. Patent Numbers: 9,333,274; 9,439,989; 9,713,223; 9,927,097; 10,357,582; 10,753,575



## Ordering

Project: \_\_\_\_\_ Date: \_\_\_\_\_  
 Luminaire Type: \_\_\_\_\_ Approved By: \_\_\_\_\_  
 Product Code: \_\_\_\_\_

Series	Size	CRI	CCT	Lumens	Voltage	Features	Finish	Mounting
VSM		80			UNV		ABF	
	14 1'x4'	80 80 CRI	30 3000K	1'x4' 04 4,000lm	UNV 120-277V	<b>N</b> Dual Mode (Antimicrobial+Light Mode & Enhanced Antimicrobial Mode) <b>W</b> Antimicrobial +Light Mode	<b>ABF</b> Gloss White Antimicrobial	<b>IF</b> Inset Door Flange <b>IG</b> Inset Door Grid
	22 2'x2'		35 3500K	2'x2' 04 4,000lm				
	24 2'x4'		40 4000K	2'x4' 08 8,000lm				

Options	
<b>Driver</b>	
<b>EBP</b>	Emergency Lighting Battery Pack
<b>Packaging</b>	
<b>S1</b>	Pack Bulk/Pallet Packed and/or Wrapped
<b>Approval</b>	
<b>X8</b>	IP65 Rating / ISO5 Cleanroom
<b>Fusing</b>	
<b>T1</b>	Fuseholder, In-line Single Pole

## Dimensions

Consult installation instructions for exact dimensions.

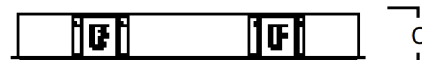
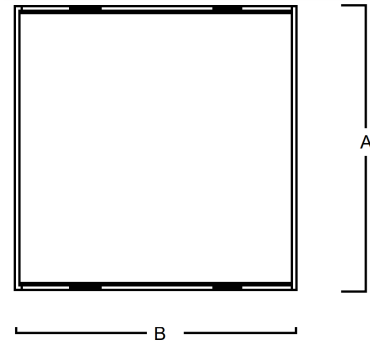
Mounting	A	B	C
IF - 1'x4'	12.3"	48.3"	3"
IF - 2'x2'	24.7"	25.3"	3"
IF - 2'x4'	24.7"	49.3"	3"
IG - 1'x4'	11.7"	47.7"	3"
IG - 2'x2'	23.7"	23.7"	3"
IG - 2'x4'	23.7"	47.7"	3"

## Performance

Size	Lumens	CRI	Watts
1'x4'	4,000	80	85
2'x2'	4,000	80	85
2'x4'	8,000	80	170

## Electrical

<b>Input Frequency</b>	50/60Hz
<b>Power Factor</b>	>.9
<b>Control</b>	On/Off via standard light switch Antimicrobial+Light Mode to Enhanced Antimicrobial Mode (optional) via low voltage switch or controls.



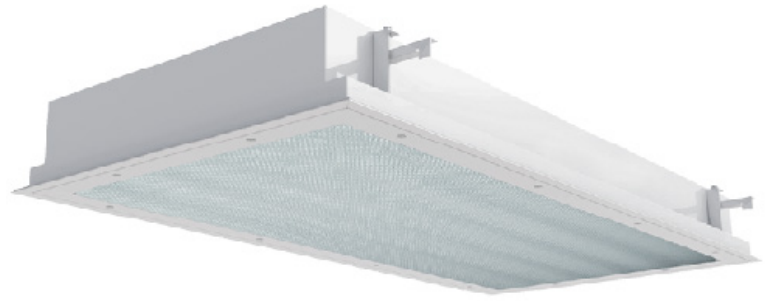
Vyv will work with your facility to customize a design for lighting and antimicrobial action. Vyv, Inc. reserves the right to upgrade and improve products without notice.

**SPECIFICATIONS AND DATA SUBJECT TO CHANGE WITHOUT NOTICE**

Updated November 16, 2022



## VSCRU Cleanroom Recessed Universal Luminaire



**Application:** The Vyv VSCRU Cleanroom Recessed Universal Luminaire is certified IP65 and rated for ISO Class 3-8 cleanrooms. The inset door seals directly to the housing and overlapping door seals to the ceiling and housing, completely covering the fixture flange. Triple gasketed, listed for wet locations and is tested to 2500Psi washdown. Inset door suitable for Biosafety BSL1-2 and overlapping door for BSL1-3.

**Mode Switching:** Use 'Antimicrobial+Light Mode' when both continuous antimicrobial action and illumination are needed and 'Enhanced Antimicrobial Mode,' which emits a higher dosage of Vyv's antimicrobial wavelengths, as an antimicrobial cleaning mode for when full illumination is not required. See installation instructions (INS-415) for wiring details.

### Product Specifications

**Housing:** Precision formed, seam welded, one-piece, hole-free construction. 20 gauge cold rolled steel standard. Rigid 18 gauge flange with welded and rounded corners for safety.

**Door Frame:** One-piece 18 gauge cold rolled steel standard, Countersunk flat head, stainless steel, captive fasteners with integral silicone o-rings. Door frame is removable, reversible, and hinged by stainless steel aircraft cables. Highly resilient and chemical resistant CertaSeal microcellular closed-cell gasket seals door frame to the housing and/or ceiling.

**Finish:** 5-stage pretreatment and antimicrobial gloss white polyester powder coated after fabrication. ASTM B117 1000hr Salt Spray tested.

**Mounting:** Flange installation is supported by swing style mounting brackets with a range of 1.3-2.9". Grid installation suitable for 1" and 1.5" T-bar NEMA LE4 Type G ceilings. See options housing for additional 2" T-Bar support. Ambient operating temperature: -4°F (-20°C) to 104°F (40°C).

**Lens:** Impact resistant 0.125" thick diffuse symmetric acrylic lens. Smooth external surface for easy cleaning. Sealed to doorframe with RTV silicone sealant and retained by continuous perimeter brackets.

**Electrical:** The standard electronic driver is constant current, programmable and dimmable to 1% using a 0-10V protocol. High efficiency (>85%) and low THD (<10%). Certified to FCC Part 15, Class A. 120-277Vac, 50/60hz. Internal Emergency Drivers are serviceable from the room side unless otherwise noted.

**LED:** Patented Vyv LED package. The range of CCT (correlated color temperature) follows the color uniformity guidelines of the American National Standard regarding specifications for the chromaticity of solid-state lighting (SSL) products as per ANSI C78.377-2017.

**Approvals:** UL listed for wet locations under covered ceilings (ANSI/UL1598 & UL8750). Recessed Type IC for insulated ceilings. NSF2 for Splash zone and non-food zones (X5 for Food Zone certification). IEC60529 IP65. Cleanroom classified ISO3-8. EU GMP Grade A. EPA Est. 94831-CAN-1. Covered by one or more of the following U.S. Patent Numbers: 9,333,274; 9,439,989; 9,713,223; 9,927,097; 10,357,582; 10,753,575



## Ordering

Project: \_\_\_\_\_ Date: \_\_\_\_\_  
 Luminaire Type: \_\_\_\_\_ Approved By: \_\_\_\_\_  
 Product Code: \_\_\_\_\_

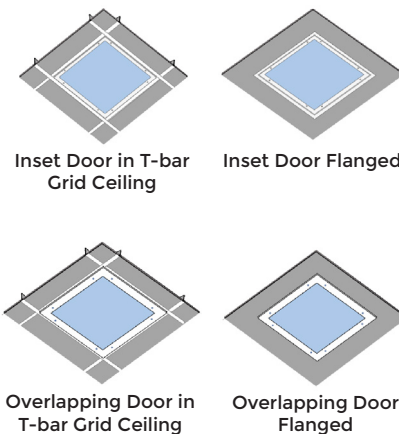
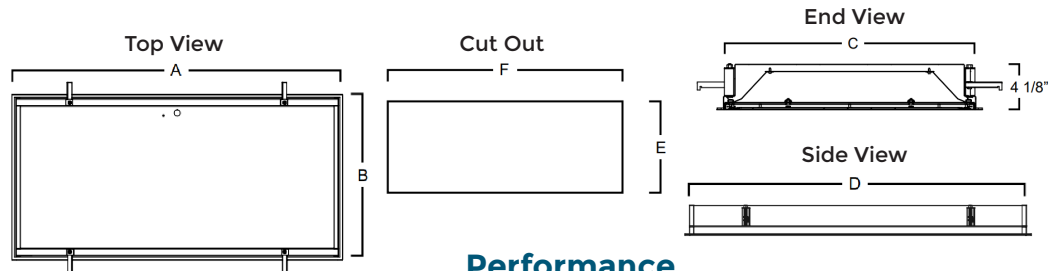
Series	Size	CRI	CCT	Lumens	Voltage	Features	Finish	Door Style
VSCRU		80			UNV		ABF	
	14 1'x4'	80 80 CRI	30 3000K	1'x4'	UNV 120-277V	<b>N</b> Dual Mode (Antimicrobial+Light Mode & Enhanced Antimicrobial Mode) <b>W</b> Antimicrobial +Light Mode	<b>ABF</b> Gloss White Antimicrobial	<b>I</b> Inset <b>O</b> Overlapping
	22 2'x2'		35 3500K	05 5,000lm				
	24 2'x4'		40 4000K	05 5,000lm 2'x4' 10 10,000lm				

Options	
<b>Driver</b>	
<b>EBP</b>	Emergency Lighting Battery Pack
<b>Lens</b>	
<b>L13</b>	0.125" Prismatic Acrylic (Pattern #12, Inverted)
<b>Construction</b>	
<b>TBAR2</b>	Housing for 2-inch T-Bar
<b>Accessories</b>	
<b>M70</b>	Install Frame (Plaster Ceilings)
<b>M46</b>	Continuous Row Mounting (Flanged Applications)
<b>Approvals</b>	
<b>X5</b>	NSF Food Zone-Non-contact
<b>Door</b>	
<b>DP</b>	20 Ga. CRS Painted
<b>DR</b>	20 Ga. 304 SS #4 Brushed
<b>DT</b>	20 Ga. 304 SS Painted
<b>DE</b>	18 Ga. 304 SS Painted
<b>DH</b>	18 Ga. 304 SS #4 Brushed
<b>DL</b>	18 Ga. 316 SS Painted
<b>DQ</b>	18 Ga. 316 SS #4 Brushed
<b>DU</b>	.050" Aluminum Painted
<b>Housing</b>	
<b>HT</b>	20 Ga. 304 SS Painted
<b>HL</b>	18 Ga. SS #316 Painted
<b>HU</b>	.050" Aluminum Painted
<b>Finish</b>	
<b>C77</b>	White Stainless Steel Door Screws

## Dimensions

Consult installation instructions for exact dimensions.

Size	A	B	C	D	E	F	Weight
1'x4'	47 3/4"	11 3/4"	10 11/16"	46 3/4"	10 11/16"	46 3/4"	32 lbs.
2'x2'	23 3/4"	23 3/4"	22 11/16"	22 7/8"	22 11/16"	22 7/8"	29 lbs.
2'x4'	47 3/4"	23 3/4"	22 11/16"	46 3/4"	22 11/16"	46 3/4"	50 lbs.



## Performance

Size	Lumens	CRI	Watts
1'x4'	5,000	80	85
2'x2'	5,000	80	85
2'x4'	10,000	80	170

## Electrical

<b>Input Frequency</b>	50/60Hz
<b>Power Factor</b>	>.9
<b>Control</b>	On/Off via standard light switch Antimicrobial+Light Mode to Enhanced Antimicrobial Mode (optional) via low voltage switch or controls.

Vyv will work with your facility to customize a design for lighting and antimicrobial action. Vyv, Inc. reserves the right to upgrade and improve products without notice.

SPECIFICATIONS AND DATA SUBJECT TO CHANGE WITHOUT NOTICE

Updated February 28, 2023

## VSAFR Cleanroom Recessed Flanged Top Access Luminaire



**Application:** The Vyv VSAFR Cleanroom Recessed Flanged Top Access Luminaire is a rear access IP65, IP66, IC-rated luminaire, for ISO Class 4 Cleanrooms. Ideal for Pharmaceutical manufacturing, Food Processing, Life Sciences and laboratories. NSF/ANSI 2 Food Zone Non-contact and Splash Zone Applications. For use in Wet Locations, Insulated Ceilings.

**Mode Switching:** Use 'Antimicrobial+Light Mode' when both continuous antimicrobial action and illumination are needed and 'Enhanced Antimicrobial Mode,' which emits a higher dosage of Vyv's antimicrobial wavelengths, as an antimicrobial cleaning mode for when full illumination is not required. See installation instructions (INS-465) for wiring details.

### Product Specifications

**Door Frame:** One piece 60° beveled perimeter fabricated from 18 gauge, cold rolled steel with TIG welded corners. The door assembly is self-centering by locating studs retained by stainless steel aircraft cable when opened. Specialized, military-grade, flat head, stainless steel, captive fasteners with integral silicone o-rings easily secure door frame to housing through floating cage nuts. Protective stops prevent fasteners from over-tightening and bending the lens door frame. Custom-shaped extruded closed-cell silicone gasketing is used throughout to ensure precise, redundant seals between door assembly, housing and plenum. Vulcanized corners ensure the continuity of the seal on the frame gasket. Continuous retention mounts mechanically secure and evenly distribute force against gasketing and diffuser.

**Housing:** Precision formed, TIG welded, one piece 18 gauge cold rolled steel housing.

**Mounting:** Swing arm mounting brackets, with vertical adjustability, are used to mount the fixture against the ceiling. Brackets provide an improved continuous seal to plenum eliminating fixture distortion.

**Lens:** Standard lens is high impact 0.125" thick acrylic lens with diffuse inner layer providing symmetric distribution. Smooth external surface for easy cleaning. Sealed to doorframe with RTV silicone sealant.

**Electrical:** Long life LED's coupled with high efficiency drivers provide quality illumination. The standard driver has a THD of <10%. Standard low-voltage dimming (0-10v, 1%). All electrical components are CSA or UL approved.

**LED:** Patented Vyv LED package. The range of CCT (correlated color temperature) follows the color uniformity guidelines of the American National Standard regarding specifications for the chromaticity of solid-state lighting (SSL) products as per ANSI C78.377-2017.

**Finish:** Antimicrobial gloss white, polyester powder painted housing.

**Approvals:** Approved to CSA and UL standards. UL listed for wet locations, insulated ceilings. EPA Est. 94831-CAN-1. Covered by one or more of the following U.S. Patent Numbers: 9,333,274; 9,439,989; 9,713,223; 9,927,097; 10,357,582; 10,753,575



## Ordering

Project: \_\_\_\_\_ Date: \_\_\_\_\_  
 Luminaire Type: \_\_\_\_\_ Approved By: \_\_\_\_\_  
 Product Code: \_\_\_\_\_

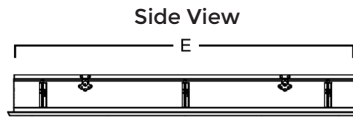
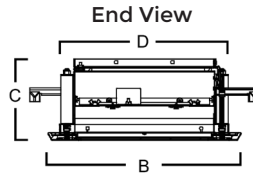
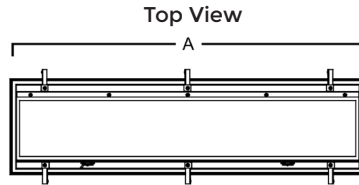
Series	Size	CRI	CCT	Lumens	Voltage	Features	Finish
VSAFR		80			UNV		ABF
	14 1'x4'	80 80 CRI	30 3000K	1'x4'	UNV 120-277V	<b>N</b> Dual Mode (Antimicrobial+Light Mode & Enhanced Antimicrobial Mode)  <b>W</b> Antimicrobial +Light Mode	<b>ABF</b> Gloss White Antimicrobial
	22 2'x2'		35 3500K	05 5,000lm			
	24 2'x4'		40 4000K	2'x2'			
				05 5,000lm 2'x4'			
				10 10,000lm			

Options	
<b>Driver</b>	
<b>EBP</b>	Emergency Lighting Battery Pack
<b>Lens</b>	
<b>L13</b>	0.125" Prismatic Acrylic (Pattern #12, Inverted)
<b>Accessories</b>	
<b>M38</b>	Install Frame (Plaster Ceilings)
<b>M62</b>	Mounting Swing Arm for 4" Deep Ceiling (Flanged Applications)
<b>Approvals</b>	
<b>X5</b>	NSF Food Zone-Non-contact
<b>Door</b>	
<b>D3</b>	304 SS #4 Polish
<b>D9</b>	316 SS #4 Polish
<b>D10</b>	Aluminium .063 Painted
<b>D17</b>	304 SS Painted
<b>D18</b>	316 SS Painted
<b>Housing</b>	
<b>C38</b>	Aluminum .050 Painted
<b>C44</b>	SS #304 Painted
<b>Finish</b>	
<b>C77</b>	White Stainless Steel Door Screws

## Dimensions

Consult installation instructions for exact dimensions.

Size	A	B	C	D	E
1'x4'	49.7"	13.7"	5.7"	12"	48"
2'x2'	25.7"	25.7"	5.7"	24"	24"
2'x4'	49.7"	25.7"	5.7"	24"	48"



## Performance

Size	Lumens	CRI	Watts
1'x4'	5,000	80	85
2'x2'	5,000	80	85
2'x4'	10,000	80	170

## Electrical

<b>Input Frequency</b>	50/60Hz
<b>Power Factor</b>	>.9
<b>Control</b>	On/Off via standard light switch Antimicrobial+Light Mode to Enhanced Antimicrobial Mode (optional) via low voltage switch or controls.

Vyv will work with your facility to customize a design for lighting and antimicrobial action. Vyv, Inc. reserves the right to upgrade and improve products without notice.

SPECIFICATIONS AND DATA SUBJECT TO CHANGE WITHOUT NOTICE

Updated February 28, 2023

## VSV Vapor Proof Luminaire



**Application:** The Vyv VSV Vapor Proof Luminaire is a specification-grade vapor proof luminaire for Cleanroom and other adverse environment applications. The luminaire can be surface or suspended (chain or cable) mounted and is IP65/IP66/IP67 certified, NEMA 4X rated. For use in Hazardous Locations, consult product code.

**Mode Switching:** Use 'Antimicrobial+Light Mode' when both continuous antimicrobial action and illumination are needed and 'Enhanced Antimicrobial Mode,' which emits a higher dosage of Vyv's antimicrobial wavelengths, as an antimicrobial cleaning mode for when full illumination is not required. See installation instructions (INS-407) for wiring details.

## Product Specifications

**Housing:** Lightweight, impact-resistant glass reinforced polyester housing. Holes on each end are 21mm (.825") nominal diameter and are provided with two EPDM rubber caps.

**Mounting:** Stainless steel mounting brackets allow for hole free surface mounting of the housing. Mounting brackets snap onto the housing at multiple places. Bail attachment comes standard to allow for chain or cable mounting (by others).

**Finish:** The internal component are polyester powder painted white finish and offers a high reflectivity coating for improved lighting performance and efficiency.

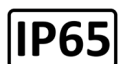
**Lens:** Deep molded high impact acrylic frosted smooth lens is standard. Other lens options available (see product code). The lens is held in place with plastic latches (optional stainless steel available, see product code).

**Gasket:** Poured in place gasket provides a continuous seal between the lens and housing.

**Electrical:** Long life LED's coupled with high efficiency drivers provide quality illumination. The standard driver comes standard with 0-10v dimming and has a THD of <10%. All electrical components are UL approved.

**LED:** Patented Vyv LED package. The range of CCT (correlated color temperature) follows the color uniformity guidelines of the American National Standard regarding specifications for the chromaticity of solid-state lighting (SSL) products as per ANSI C78.377-2017.

**Approvals:** Approved to UL Standards. Wet locations, IP65/IP66/IP67, housing is NSF component listed. For use in Hazardous Locations. Class I Zone 2, Zone 22. Consult product code for HazLoc options and Temperature Codes. NEMA 4X rated. EPA Est. 94831-CAN-1. Covered by one or more of the following U.S. Patent Numbers: 9,333,274; 9,439,989; 9,713,223; 9,927,097; 10,357,582; 10,753,575



## Ordering

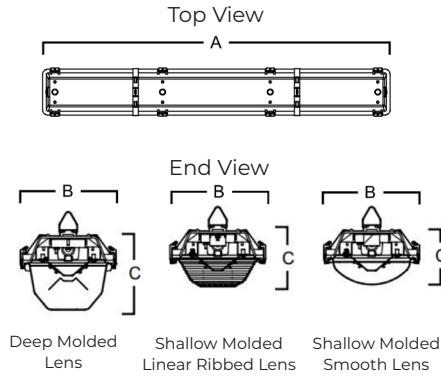
Project: \_\_\_\_\_ Date: \_\_\_\_\_  
 Luminaire Type: \_\_\_\_\_ Approved By: \_\_\_\_\_  
 Product Code: \_\_\_\_\_

Series	Size	CRI	CCT	Lumens	Voltage	Features	Options
VSV		80			UNV		
	24 24"	80 80 CRI	30 3000K	24"	UNV 120-277V	<b>N</b> Dual Mode (Antimicrobial+Light Mode & Enhanced Antimicrobial Mode)  <b>W</b> Antimicrobial +Light Mode	<b>Driver</b> <b>EBP*</b> Emergency Lighting Battery Pack  <b>Lens</b> <b>L69</b> Shallow Molded Lens High Impact Acrylic Frosted Linear Ribbed  <b>L83</b> Shallow Molded Lens High Impact Acrylic Frosted Smooth  <b>L85</b> Shallow Molded Lens Polycarbonate Frosted Smooth  <b>L86</b> Shallow Molded Lens Polycarbonate Clear Smooth
	48 48"		35 3500K	02 2,000lm			
	96 96"		40 4000K	04 4,000lm			
				08 8,000lm			

## Dimensions

Consult installation instructions for exact dimensions.

Size	A	B	C		
			Deep Molded	Shallow Molded Linear Ribbed	Shallow Molded Smooth
24"	6.75"	5.6"	4.2"	3.9"	
48"	6.75"	5.6"	4.2"	3.9"	
96"	6.75"	5.6"	4.2"	3.9"	



## Performance

Size	Mode	Lumens	CRI	Watts
24"	Antimicrobial+Light	2,000	80	40
24"	Enhanced Antimicrobial	N/A	N/A	35
48"	Antimicrobial+Light	4,000	80	80
48"	Enhanced Antimicrobial	N/A	N/A	70
96"	Antimicrobial+Light	8,000	80	160
96"	Enhanced Antimicrobial	N/A	N/A	140

## Electrical

<b>Input Frequency</b>	50/60Hz
<b>Power Factor</b>	>.9
<b>Control</b>	On/Off via standard light switch Antimicrobial+Light Mode to Enhanced Antimicrobial Mode (optional) via low voltage switch or controls.

\* Emergency battery pack is not available with VSV-24 or Haz Loc (XH)

\*\* 1% dimming not available with Hazardous Location Luminaires. Supplied with 2pc. of HAZLOC 1/2" Hubs and 1pc. of 1/2" Thread Plug. Cord not available.

Operation limited to ambient temperature ≤35 °C.

Vyv will work with your facility to customize a design for lighting and antimicrobial action. Vyv, Inc. reserves the right to upgrade and improve products without notice.

**SPECIFICATIONS AND DATA SUBJECT TO CHANGE WITHOUT NOTICE**

Emergency battery packs have limited operating temperatures. Consult factory.

Updated August 25, 2022

## VSVH High Bay Vapor Proof Luminaire



**Application:** The Vyv VSVH High Bay Vapor Proof Luminaire is a premium-grade high or low bay luminaire for use with indoor and outdoor applications where dust/water resistance is required. The glass reinforced polyester housing and acrylic lens makes it ideal for applications that require a high degree of ingress protection. Suitable for 1500psi pressure spray down. Operating ambient temperature range is from -40° to 35°C.

**Mode Switching:** Use 'Antimicrobial+Light Mode' when both continuous antimicrobial action and illumination are needed and 'Enhanced Antimicrobial Mode,' which emits a higher dosage of Vyv's antimicrobial wavelengths, as an antimicrobial cleaning mode for when full illumination is not required. See installation instructions (INS-408) for wiring details.

### Product Specifications

**Housing:** Molded one-piece glass reinforced plastic housing. Continuous poured in place polyurethane gasket. Diffuser flange fits into the gasketed retention slot providing a continuous seal, and is held in place with 12 white celcon retaining latches. Holes on each end are 7/8 inch nominal diameter and are provided with two EPDM rubber caps for connection and through wiring.

**Finish:** Pre-painted steel geartrays.

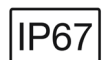
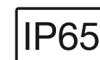
**Lens:** Lens is optically clear impact resistant acrylic for maximum light transmission and longevity. The sides have precise linear prisms and ends are frosted to reduce direct glare.

**Mounting:** Stainless steel V-hook hangers are standard. Optional cable hangers and ceiling-mount brackets are available.

**Electrical:** Long life LED's coupled with high efficiency drivers provide quality illumination. The standard driver comes standard with 0-10v dimming and has a THD of <10%. All electrical components are UL approved.

**LED:** Patented Vyv LED package. The range of CCT (correlated color temperature) follows the color uniformity guidelines of the American National Standard regarding specifications for the chromaticity of solid-state lighting (SSL) products as per ANSI C78.377-2017.

**Approvals:** Approved to UL standards. Suitable for wet locations. IP65/67 certified, housing is NSF component listed. EPA Est. 94831-CAN-1. Covered by one or more of the following U.S. Patent Numbers: 9,333,274; 9,439,989; 9,713,223; 9,927,097; 10,357,582; 10,753,575



## Ordering

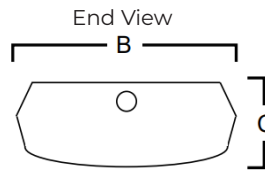
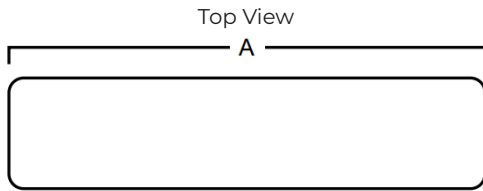
Project: \_\_\_\_\_ Date: \_\_\_\_\_  
 Luminaire Type: \_\_\_\_\_ Approved By: \_\_\_\_\_  
 Product Code: \_\_\_\_\_

Series	Size	CRI	CCT	Lumens	Voltage	Features	Options
VSVH	48	80		075	UNV		
	48 48"	80 80 CRI	30 3000K 35 3500K 40 4000K	075 7,500lm	UNV 120-277V	<b>N</b> Dual Mode (Antimicrobial+Light Mode & Enhanced Antimicrobial Mode) <b>W</b> Antimicrobial +Light Mode	<b>Driver</b> <b>EBP*</b> Emergency Lighting Battery Pack  <b>Wiring</b> <b>B11</b> Flexible Feed Cord (Single Circuit Only) 6-ft <b>B2</b> Liquid Tight Strain Relief (Not for XH) <b>B16</b> Wiring 2-Circuit Cord <b>Packaging</b> <b>S1</b> Pack Bulk/Pallet Packed and/or Wrapped  <b>Housing</b> <b>C2</b> Stainless Steel Latches <b>C3</b> Tamperproof Latches <b>Approved</b> <b>XH**</b> Class I Zone 2 Groups IIC, IIB + H2, IIA Zone 22 Groups IIB, IIA (Class I Div 2 Groups A,B,C,D Class II Div 2 Groups F,G Class III) T3C or T4

## Dimensions

Consult installation instructions for exact dimensions.

Size	A	B	C
48"	52"	14 5/8"	6 1/16"



## Mounting Accessories (Ordered Separately)

- KIT00001** Mounting Chain Set (2) 4ft w/ S-Hooks.M10
- KIT00006** Rigid Mounting Beam.M63
- KIT00013** Ceiling Plate w/ Wireform.M39
- KIT00040** Chain Set (2) 6ft.M10 w/ S-Hooks (4)
- KIT00042** Chain Set (2) 12ft.M10 w/ S-Hooks (4)
- KIT00092** 25 Degree Bracket.M43(25)
- KIT00093** 45 Degree Bracket.M43(45)

## Performance

Size	Lumens	CRI	Watts
48"	7,500	80	160

## Electrical

<b>Input Frequency</b>	50/60Hz
<b>Power Factor</b>	>.9
<b>Control</b>	On/Off via standard light switch Antimicrobial+Light Mode to Enhanced Antimicrobial Mode (optional) via low voltage switch or controls.

\* Emergency battery pack is not available with Haz Loc (XH)

\*\* 1% dimming not available with Hazardous Location Luminaires. Supplied with 2pc. of HAZLOC 1/2" Hubs and 1pc. of 1/2" Thread Plug. Cord not available.

Operation limited to ambient temperature ≤35 °C.

Vyv will work with your facility to customize a design for lighting and antimicrobial action. Vyv, Inc. reserves the right to upgrade and improve products without notice.

**SPECIFICATIONS AND DATA SUBJECT TO CHANGE WITHOUT NOTICE**

Emergency battery packs have limited operating temperatures. If a fixture is to be switched to a 2-circuit cord B16 is advised. Consult factory.

Updated August 25, 2022



## VVLBFP Lightbar for Food Processing



**Application:** The Vyv VVLBFP Lightbar for Food Processing is a linear rounded top slim design fixture for use in heavy hosedown industrial food processing applications.

**Mode Switching:** Use 'Antimicrobial+Light Mode' when both continuous antimicrobial action and illumination are needed and 'Enhanced Antimicrobial Mode,' which emits a higher dosage of Vyv's antimicrobial wavelengths, as an antimicrobial cleaning mode for when full illumination is not required. See installation instructions (INS-456) for wiring details.

### Product Specifications

**Housing:** Seamless coextruded copolyester rounded outer shell aluminum housing. This patented process combines copolyester and aluminum together, with no seals or gaskets. The result is a single piece enclosure with excellent heatsinking characteristics for long lifetime.

**Mounting:** Chain/cable mount standard (chains/cables by others). Surface mount kit optional (2 - 316 stainless steel band mounts). Wall mount kit optional (2 - 316 stainless steel 45-degree angle band mounts).

**Lens:** Standard copolyester lens with high transmission of antimicrobial wavelengths and extreme chemical resistance. Inner diffuse layer with Dual Mode and Antimicrobial+Light Mode.

**Electrical:** Long life LEDs coupled with high efficiency drivers. Ambient temperature -40C to 40C.

**LED:** Patented Vyv LED package provides superior irradiance.

**Approvals:** cULus Listed. UL Listed for Wet Locations. IP69K Certified (1500 PSI), IK10 Impact Certified, NSF Certified, NEMA 4X and NEMA 6P Rated. EPA Est. 92639-NY-1. Covered by one or more of the following U.S. Patent Numbers: 9,333,274; 9,439,989; 9,713,223; 9,927,097; 10,357,582; 10,753,575



## Ordering

Project: \_\_\_\_\_ Date: \_\_\_\_\_  
 Luminaire Type: \_\_\_\_\_ Approved By: \_\_\_\_\_  
 Product Code: \_\_\_\_\_

Series	Size	CRI*	CCT*	Lumens*	Voltage	Features	Wiring Connector
VVLBFP		80			UNV		MCR5
	24 24"	80 80 CRI	30 3000K	24" 2,000lm	UNV 120-277V	<b>N</b> Dual Mode (Antimicrobial+Light Mode & Enhanced Antimicrobial Mode) <b>W</b> Antimicrobial +Light Mode <b>E</b> Enhanced Antimicrobial Mode	<b>MCR5</b> Mini-Change Receptacle, 5 Pole
	48 48"		35 3500K	02 2,000lm			
	96 96"		40 4000K	48" 4,000lm			
				04 4,000lm 96" 8,000lm 08 8,000lm			

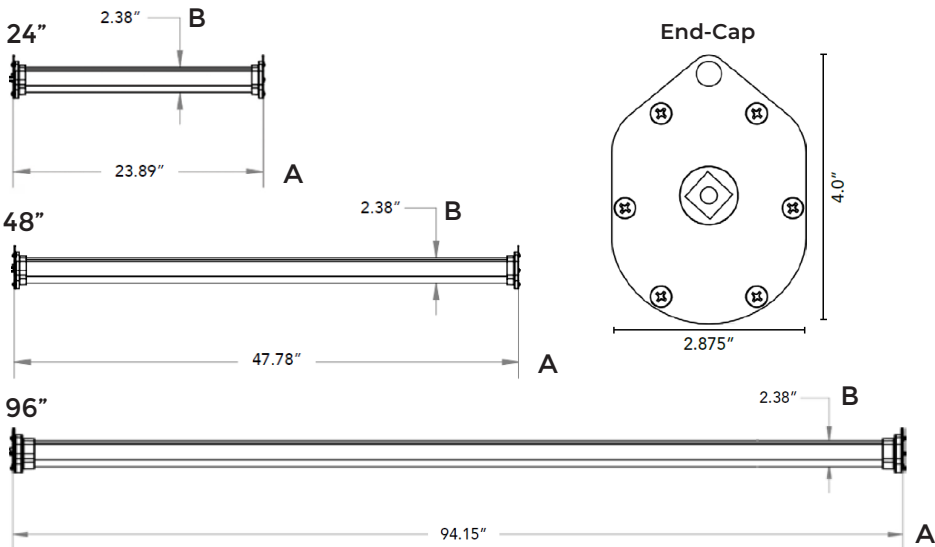
\*CRI, CCT and Lumens not required for Enhanced Antimicrobial Mode only. Example: VVLBFP-48-UNV-E-MCR5

## Accessories Ordered Separately

Cabling/Wiring Connector	Mounting
<b>LC-MCR5-06</b> 6' Leader Cable, 5 Pole, 16 AWG, Yellow <b>LC-MCR5-20</b> 20' Leader Cable, 5 Pole, 16 AWG, Yellow <b>JC-MCR5-03</b> 3' Jumper Cable, 5 Pole, 16 AWG, Yellow <b>JC-MCR5-06</b> 6' Jumper Cable, 5 Pole, 16 AWG, Yellow <b>JC-MCR5-12</b> 12' Jumper Cable, 5 Pole, 16 AWG, Yellow <b>DT-MCR5</b> Mini-Change-to-Mini-Change Drop Tee, 5 Pole	<b>STANDARD</b> All Fixtures Include Cable Mount Option (Actual Cable/Chain Not Included) <b>MNT-SM</b> Surface Mount Kit - Includes (2) Stainless Steel Band Mounts <b>MNT-WM</b> Wall Mount Kit - Includes (2) Stainless Steel 45-Degree Angle Band Mounts

## Basic Dimensions

Consult installation instructions for exact dimensions.



## Dimensions

Size	A	B
24"	23.89"	2.38"
48"	47.78"	2.38"
96"	94.15"	2.38"

## Performance

Size	Watts
24"	33.4
48"	65.1
96"	130.2

Vyv will work with your facility to customize a design for lighting and antimicrobial action. Vyv, Inc. reserves the right to upgrade and improve products without notice.

SPECIFICATIONS AND DATA SUBJECT TO CHANGE WITHOUT NOTICE

Updated March 27, 2023



## VTL Task Light



**Application:** The Vyv VTL Task Light is a premium grade, under cabinet task light. For use with indoor applications where low glare illumination and ease of installation are required. This luminaire's shallow design with its standard cord plug set makes it ideal for use as task lighting for various applications.

**Mode:** Use 'Antimicrobial+Light Mode' when both continuous antimicrobial action and illumination are needed. See installation instructions (INS-464) for wiring details.

## Product Specifications

**Housing:** Die-formed, code gauge steel. One-piece folded construction. Spot welded for rigidity and clean appearance. Standard 10' three wire cord and plug set. Center exit is standard.

**Mounting:** Key holes provided for easy mounting. Flush mounting surface contains no offsets or exposed fastener heads.

**Lens:** Standard diffuser is a clear prismatic pattern #12 acrylic lens, designed for high efficiency and low-glare illumination.

**Finish:** Antimicrobial gloss white polyester powder coat finish with a 5-stage pretreatment or textured, sandtex black, polyester powder painted. High reflectivity coated reflecting surfaces for improved efficiency.

**Electrical:** Long life LEDs coupled with high efficiency drivers, provide quality illumination.

**LED:** Patented Vyv LED package. The range of CCT (correlated color temperature) follows the color uniformity guidelines of the American National Standard regarding specifications for the chromaticity of solid-state lighting (SSL) products as per ANSI C78.377-2017.

**Approvals:** Approved to UL standards. EPA Est. 94831-CAN-1. Covered by one or more of the following U.S. Patent Numbers: 9,333,274; 9,439,989; 9,713,223; 9,927,097; 10,357,582; 10,753,575



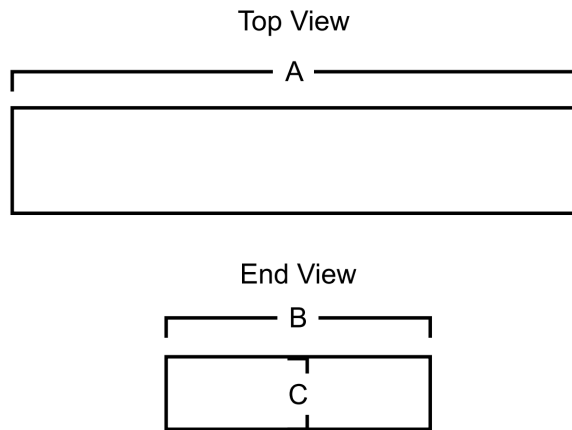
## Ordering

Project: \_\_\_\_\_ Date: \_\_\_\_\_  
 Luminaire Type: \_\_\_\_\_ Approved By: \_\_\_\_\_  
 Product Code: \_\_\_\_\_

Series	Size	CRI	CCT	Lumens	Voltage	Features	Finish	Options
VTL		<b>80</b>			<b>UNV</b>	<b>W</b>		
	<b>24</b> 24"	<b>80</b> 80 CRI	<b>30</b> 3000K	<b>24"</b>	<b>UNV</b> 120-277V	<b>W</b> Antimicrobial +Light Mode	<b>ABF</b> Gloss White Antimicrobial <b>BLK</b> Black	<b>Wiring</b> <b>V00</b> No Cord - Hard Wire <b>V02</b> Convenience Outlet <b>V77</b> PIR Integral Occupancy Sensor (Not available with Rocker Switch)
	<b>48</b> 48"		<b>35</b> 3500K	<b>017</b> 1,700lm				
			<b>40</b> 4000K	<b>48"</b>				
			<b>032</b> 3,200lm					

## Dimensions

Consult installation instructions for exact dimensions.



## Dimensions

LENGTH	SIZE		
	A	B	C
<b>24</b>	24"	7"	1.75"
<b>48</b>	48"	7"	1.75"

## Electrical

<b>Input Frequency</b>	50/60Hz
<b>Power Factor</b>	>.9

## Performance

<b>Length</b>	24"	48"
<b>Lumens</b>	1,700	3,200
<b>CRI</b>	80	80
<b>Watts</b>	25.6	47.6

Vyv will work with your facility to customize a design for lighting and antimicrobial action. Vyv, Inc. reserves the right to upgrade and improve products without notice.

SPECIFICATIONS AND DATA SUBJECT TO CHANGE WITHOUT NOTICE

Updated November 16, 2022

## VSB Bay Luminaire



**Application:** The Vyv VSB Bay Luminaire, with its continuous row-mounting capability, is a shallow ADA design, commercial-grade, surface or suspended mounted wrap-around ceiling luminaire with contemporary styling for use in indoor applications.

**Mode Switching:** Use 'Antimicrobial+Light Mode' when both continuous antimicrobial action and illumination are needed and 'Enhanced Antimicrobial Mode,' which emits a higher dosage of Vyv's antimicrobial wavelengths, as an antimicrobial cleaning mode for when full illumination is not required. See installation instructions (INS-405) for wiring details.

## Product Specifications

**Housing:** Die-formed, code gauge steel housing. Ballast cover snaps into place eliminating the need for tools when accessing the ballast.

**Mounting:** Embossed mounting holes are provided to prevent distortion of housing when tightening mounting fasteners. Offset mounting pads are formed within the housing and keep luminaire level and slightly off of the mounting surface. Optional suspended mounting accessories are available. Mounts over electrical junction box.

**Lens:** Designed for an even and low-glare illumination, the standard acrylic diffuser is pressure-fitted into place to create a clean looking, easy maintenance lens.

**Finish:** Post-painted, high-reflectance white housing.

**Electrical:** Long life LEDs coupled with high efficiency drivers, provide quality illumination. The standard driver comes standard with 0-10v dimming and has a THD of <10%. All electrical components are UL approved. Sufficient knockouts are provided for connections and through wiring.

**LED:** Patented Vyv LED package. The range of CCT (correlated color temperature) follows the color uniformity guidelines of the American National Standard regarding specifications for the chromaticity of solid-state lighting (SSL) products as per ANSI C78.377-2017.

**Approvals:** Approved to UL standards. Suitable for damp locations. EPA Est. 94831-CAN-1. Covered by one or more of the following U.S. Patent Numbers: 9,333,274; 9,439,989; 9,713,223; 9,927,097; 10,357,582; 10,753,575



## Ordering

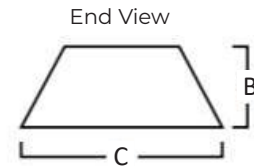
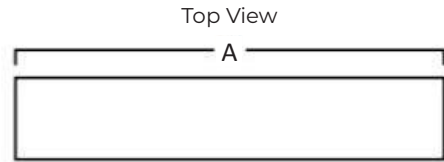
Project: \_\_\_\_\_ Date: \_\_\_\_\_  
 Luminaire Type: \_\_\_\_\_ Approved By: \_\_\_\_\_  
 Product Code: \_\_\_\_\_

Series	Size	CRI	CCT	Lumens	Voltage	Features	Options
VSB	24 24"	80 80 CRI	30 3000K 35 3500K 40 4000K	24"	UNV UNV 120-277V	<b>N</b> Dual Mode (Antimicrobial+Light Mode & Enhanced Antimicrobial Mode) <b>W</b> Antimicrobial +Light Mode	<b>Driver</b> <b>EBP</b> Emergency Lighting Battery Pack <b>Housing</b> <b>C27</b> Uplight Slots <b>Packaging</b> <b>S1</b> Pack Bulk/ Pallet Packed and/or Wrapped <b>S2</b> Pack Single
	48 48"			02 2,000lm			
	96 96"			03 3,000lm			
				48"			
				04 4,000lm			
				06 6,000lm			
				96"			
	08 8,000lm						
	12 12,000lm						

## Dimensions

Consult installation instructions for exact dimensions.

Size	A (in.)	B (in.)	C (in.)
24	23 3/8	3.25	8.5
48	46 1/16	3.25	8.5
96	92 1/8	3.25	8.5



## Mounting Accessories (Ordered Separately)

- KIT00001** Chain Set (2) 4ft w/ S-hooks.M10
- KIT00002** Speedy Hangers (2).M23
- KIT00003** Stem & Canopy Set 3/8"IP (2) 4ft.M26
- KIT00004** Aircraft "Y" Cable (10Ft) with Adjustable Grip (2).M36
- KIT00027** Aircraft "Y" Cable (5Ft) with Adjustable Coupler, 6-Ft Cord Set & Canopy Kit (2) Chain Set (2) 6ft w/ S-hooks.M10

## Electrical

<b>Input Frequency</b>	50/60Hz
<b>Power Factor</b>	>.9
<b>Control</b>	On/Off via standard light switch Antimicrobial+Light Mode to Enhanced Antimicrobial Mode (optional) via low voltage switch or controls.

## Performance

<b>Size</b>	24"	24"	48"	48"	96"	96"
<b>Lumens</b>	2,000	3,000	4,000	6,000	8,000	12,000
<b>CRI</b>	80	80	80	80	80	80
<b>Watts</b>	42	64.5	84	129	168	258

Vyv will work with your facility to customize a design for lighting and antimicrobial action. Vyv, Inc. reserves the right to upgrade and improve products without notice.

SPECIFICATIONS AND DATA SUBJECT TO CHANGE WITHOUT NOTICE

Updated August 25, 2022

# Bright Solutions for a Cleaner World.

Contact Vyv:



1-518-833-0261



[info@vyv.tech](mailto:info@vyv.tech)

Updated May 10, 2023



13 British American Blvd., Latham, NY 12110

[vyv.tech](https://vyv.tech)